

Bid Addendum No. 1 for:

MASON TRANSIT AUTHORITY – BELFAIR PARK AND RIDE PROJECT

To: All Prospective Bidders

From: Patrick Holm, PE

RE: MASON TRANSIT AUTHORITY – BELFAIR PARK AND RIDE PROJECT

All Bidders are required to make the following substitutions to the Bid Documents. Below is a description of the revisions made to the Contract Documents.

Plans:

- Sheet SD-3: Replace with attachment SD-3 to include updated cross section details
- Sheet WA-1: Replace with attachment WA-1 to include updated water plans
- Sheet WA-3: Replace with attachment WA-3 to include RPBA (reduced pressure backflow assembly) detail
- Sheet IL-1: Replace with attachment IL-1 to include parking lot light specifications
- Sheet E0.1, Legend: **REVISE** symbol for wireless access point to triangle within a circle as shown on Attachment ESK-2.
- Sheet E2.1, Multi Purpose 101 & Storage 114: **REVISE** circuit designation “HA-1” to read “A2-6”.
- Sheet E2.1, Hall 110: **REVISE** per attachment ESK-1 to include lighting and control for Reception 102 and Closet 115 [work includes but is not limited to addition of (1) type L2, (1) type R1, separate controls for Reception 102 from Hall 110 and control for Closet 115].
- Sheet E2.1, all other spaces: **REVISE** “HA-#” to read “A2-#”.
- Sheet E3.1, Hall 110: **REVISE** per attachment ESK-2 to include power and data for Reception 102 [work includes but is not limited to (6) duplex receptacles and (3) duplex data stations].
- Sheet E3.1, Kitchen 105: **REVISE** location of receptacle shown near door on circuit A1-12 to be located on island, verify exact location prior to rough-in.
- Sheet E3.1, Bubble Note 8: **ADD** “PROVIDE FREE STANDING EQUIPMENT CABINET WITH (1) 48-PORT CAT 6 STATION PATCH PANEL + (1) 24-PORT CAT 6 WAP PATCH PANEL + (1) 24-PORT CCTV PATCH PANEL WITH (3) 2RMU VERTICAL MANAGEMENT PANELS + (1) SURGE PROTECTED PLUG STRIP. PROVIDE GROUNDING KIT, GROUND BAR & #6 GROUND TO BUILDING GROUND SYSTEM.”
- Sheet E5.1, Panel A2 Schedule:
 - Circuit 1, **REVISE** description to read: “LTS – RM 102, 105-110, 113”, load: 772 VA.
 - Circuit 6, **REVISE** description to read: “LTS – RM 101, 114”, load: 743 VA.
 - Circuit 26, **ADD** 20A/1P circuit breaker, **REVISE** description to read: “RECEP – RECEPTION 102”, load: 360 VA.

Circuit 28, **ADD** 20A/1P circuit breaker, **REVISE** description to read: "RECEP – RECEPTION 102", load: 360 VA.

Circuit 30, **ADD** 20A/1P circuit breaker, **REVISE** description to read: "RECEP – RECEPTION 102", load: 360 VA.

Specifications:

- Section 04 41 00 Architectural Wood Casework, Section 2.05 Accessories, E. Grommets: ADD at the end of the sentence; Contractor to provide a minimum of 4 grommets at the Reception Counter Area. Locations to be determined by Architect / Owner in the field.
- Section 27 10 01, 2.06, A. **REVISE** to read: "Equipment Cabinets, Floor: Free-standing, removable side panels, hinged steel vented rear door with lock, hinged steel front with lock, 24 inch by 24 inch by 84 inch with EIA provisions for rack mounted 19-inch wide equipment, integral ventilation blower with filter kit, plug strip, grounding kit and floor levelers. Furnish with four equipment shelves and mounting hardware. Locks shall be keyed to match branch circuit panelboard. Finish: Black."

Bid Package:

- Advertisement to Bid:
 - Revised – Project Proposal sealed bids are now due Friday, March 20, 2020.
- Bid Form/Schedule of Values:
 - Added bid line items

Approval of Substitutions:

The following is a list of approved manufacturers which may be substituted for those Specified in the specifications.

This approval is an approval of quality only. No attempt has been made to check each material as to special features, capacities or physical dimensions especially required by this project. It shall be the responsibility of the supplier, manufacturer and contractor to check all requirements before submitting for final approval. Final approval of exact features, sizes, capacities, etc., all of which must match materials indicated/specified, will be determined when submitted during construction period. Certain approvals are subject to conditions as noted.

Section	Product/Manufacturer	Comments
07 54 23	TPO Roofing / Versico	Approved to meet or exceed specified product(s)
06 03 18	FRP/Nudo	Approved to meet or exceed specified product(s)
09 51 00	Acoustical Ceiling Tile and Grid-Rockfon Artic 661 and Rockfon Chicago Metallic Seismic 1200	Approved to meet or exceed specified product(s)
07 46 16	Metal wall and roof panels-Bryer Company 7.2 Rib	Approved to meet or exceed specified product(s)-Colors must be able to match those specified.

260920	Lighting Controls - Lutron	Approved with timeclock control for Multi-Purpose, Hallways, Canopy, Parking Lot and receptacles in Multi-Purpose and Break Room.
265000	CM1 / CM1E – Gardco SoftView	Approved.
	R1 - Lightolier SlimSurface	Approved.
	UC – Day-Brite LINCS	Not Approved.
	UC – Williams 1SF	Approved.
	L2, L2E, L4 – Coronet KSR1	Not Approved.
	L2, L2E, L4 – Lithonia 2BLT	Approved with ADP diffuser *
	R1 – Juno Slimform	Approved.
	R6 – Lithonia LDN6	Approved.
	SL – Lithonia ZL1D	Approved.
	V1 – New Star RUD	Not Approved.
	V1 – Coronet FP1 LED	2-Foot, High Output (LTG3) Approved
	WM1 – Lithonia WDGE2	Approved.
	S1 – Luminaire Vision 4	Approved.
	S2 – Lithonia KACM	Approved.
	Exit – Lithonia LQM	Approved.
	EM – Lithonia EU2C	Approved.

Clarifications/Additional Information:

The following is additional information and clarification responding to questions from bidders:

- Has the drainage swale on the southeast of the project been constructed?
 - The drainage swale has been rough graded $\pm 0.5'$ of subgrade.
- Are the piping/utilities shown on the stormwater ponds already installed as well?
 - The stormwater structures already constructed onsite are CB 3, CB 4, and the pipes from the bioretention facility to the storm pond, from CB 3 to the storm pond, and from CB 4 to the storm pond. The quarry spalls at those locations have been installed.
- The bid line items have no description of what they entail or correspond to in the specs. What is surfacing line item 6 and where do you put items such as Hydroseeding, Landscaping, Curb and Gutter, Flagpole, and Fence and Gate?
 - See attached revised Bid Form/Schedule of Values. The Schedule of Values has been updated with additional items. It is at the Contractor's discretion on where to put construction items that may fall in multiple line items; however, all work must be accounted for in the schedule of values provided.
- Who is responsible for the bus shelter and install?
 - Mason Transit Authority (MTA)
- Site grooving – what elevation has the site been graded to?
 - The site has been graded to $\pm 0.5'$ of subgrade.
- Is stockpile usable for structural fill?

- Yes, see Geotechnical Report. There is approximately 7,500 cubic yards of stockpiled soil.
- Is there a dedicated location to take export material?
 - No
- Why isn't the contractor who made the pile responsible for getting rid of it?
 - Removing the stockpile was not part of their contract.
- What is the boundary between ACI work and proposed new work for civil and utilities?
 - Property line.
- What type of curb is around the drainage ditch in the parking lot?
 - The ditch does not have curb around it.
- Are there written specifications for the parking lot lighting poles and fixtures that are shown to be installed on plan sheet IL-1? Besides the note 2.05 on Spec page 265000-3 on the wind loading of the poles, I don't see any further information on them in the specs.
 - See revised sheet IL-1 included in Bid Addendum
- Is an electric service cabinet required for the parking lot lighting? There is a detail in the legend on IL-1 but no detail in the plans or construction notes.
 - The electric service cabinet is part of the building and is integrated into the electrical building plans.

Attachments:

- Advertisement to Bid
- Bid Form/Schedule of Values
- SD-3: Drainage Details
- WA-1: Water System Plan
- WA-3: Water Details
- IL-1: Lighting and Security Plan
- ESK-1: Partial Lighting Plan
- ESK-2: Partial Power & Signal Plan

Mason Transit Authority
Advertisement to Bid
MTA – Belfair Park and Ride Project

Mason Transit Authority (MTA), located in Shelton, Washington, requests Project Proposal SEALED BIDS for construction of the:

MASON TRANSIT AUTHORITY
MTA – Belfair Park and Ride Project

The improvement(s) for which Project Proposals will be received is described below:

Construction of a Park and Ride near the intersection of Log Yard Road and State Route 3 in Belfair which will include pavement, transit building, bus canopy, sidewalk, ADA facilities, stormwater facilities, septic system, illumination, signing, striping, and other work, all in accordance with the attached Contract Plans, these Contract Provisions, and the Standard Specifications.

The transit building will include a new 3,000 square foot single story wood framed structure constructed on concrete slab, with new single slope single ply roofing construction. Exterior walls are a combination of wood siding and metal siding with anodized aluminum windows and doors. Interior are wood framed walls with gypsum and some ceramic tile with minimal interior finishes. Additional work includes hollow metal doors, frames and wood doors. Work includes full fire suppression system, mechanical, electrical, and plumbing systems.

The bus canopy will include a single story steel framed canopy with metal roofing. The canopy is open below the roof for the pass through of buses. Steel shall be painted. Work includes sheet metal gutters, downspouts and trim, electrical, and fire suppression system.

Bid Documents, including Plans and Special Provisions, may be obtained through Builders Exchange of Washington (<http://www.bxwa.com>) or MTA's Website (<http://www.masontransit.org>). Inquiries regarding the Project may be directed by contacting Patrick Holm at SCJ Alliance (360-352-1465 or patrick.holm@scjalliance.com).

Project Proposal SEALED BIDS must be received at the Mason Transit Authority Business Office reception desk located at 790 East Johns Prairie Road, Shelton, WA 98584 by 11:00a.m. on March 20, 2020 and MTA then and there will open and publicly read the bids. Bids may be submitted by mail or hand delivery only.

A pre-bid walkthrough is planned for March 3rd at 11:00a.m. at the future park and ride site near the intersection of Log Yard Road and SR-3 north of Belfair, WA. The site is an active construction site and hard hats and vests are required.

Mason Transit Authority reserves the right to reject any and all bids without cause and to waive any informalities or irregularities. MTA reserves the right to award this Contract to the lowest responsive, responsible bidder based on the Bid Proposal.

ADVERTISED IN:

Mason Transit Authority Website www.masontransit.org
Builders Exchange of Washington
Seattle Daily Journal of Commerce
Shelton Journal

BID FORM/SCHEDULE OF VALUES

As part of the overall Base Bid the Bidder shall assign lump costs (including all taxes) to the line items listed in the following Schedule of Values. At the end of each month of construction the Contractor will submit an estimated percentage complete for the budget of each line item shown in the Schedule of Values. The Contracting Agency will then review and confirm if the Contractor percentage complete listed on the schedule corresponds to the actual work performed, including materials on hand.

The Owner reserves the right to accept or reject any or all bid prices within sixty (60) days of the bid date.

1. Mobilization (includes any incidentals/bond/etc.) _____
 2. Erosion Control _____
 3. Clearing & Grubbing _____
 4. Grading _____
 5. Stormwater Management Systems _____
 6. Surfacing _____
 7. Paving _____
 8. Site Improvements _____
 9. Transit Building _____
 10. Bus Canopy _____
 11. Illumination System _____
 12. Water system _____
 13. Septic System _____
 14. Pavement Markings _____
 15. Permanent Signing _____
 16. Traffic Control _____
 17. Surveying _____
 18. Landscaping _____
 19. Clean-Up _____
-

MASON TRANSIT AUTHORITY
MTA – BELFAIR PARK AND RIDE PROJECT

Total Base Bid _____

Trench Excavation Safety Provisions _____

(Included also in Base Bid)

If the bid amount contains any work which requires trenching exceeding a depth of four feet, all costs for trench safety shall be included in the Base Bid and indicated above for adequate trench safety systems in compliance with Chapter 39.04 RCW, 49.17 RCW and WAC 296-155-650. Bidder must include a lump sum dollar amount in blank above (even if the value is \$0.00) to be responsive.

The Owner reserves the right to accept or reject any or all bid prices within sixty (60) days of the bid date.

Time for Completion:

The undersigned hereby agrees to complete all the work under the Base Bid (and accepted alternates) within 260 working days after the date of Notice to Proceed.

Liquidated Damages:

The undersigned agrees to pay the Owner as liquidated damages the sum of \$350 for each consecutive calendar day that is in default after the Contract Time. Liquidated damages shall be deducted from the contract by change order.

Receipt of Addenda

Receipt of the following addenda is acknowledged:

Addendum No. _____
Addendum No. _____
Addendum No. _____

Addendum No. _____
Addendum No. _____
Addendum No. _____

MASON TRANSIT AUTHORITY
MTA – BELFAIR PARK AND RIDE PROJECT

Name of Firm _____

NOTE: *If bidder is a corporation, write State of Incorporation; if a partnership, give full names and addresses of all parties below.*

Signed by _____, Official Capacity _____

Print Name _____

Address _____

City _____ State _____ Zip Code _____

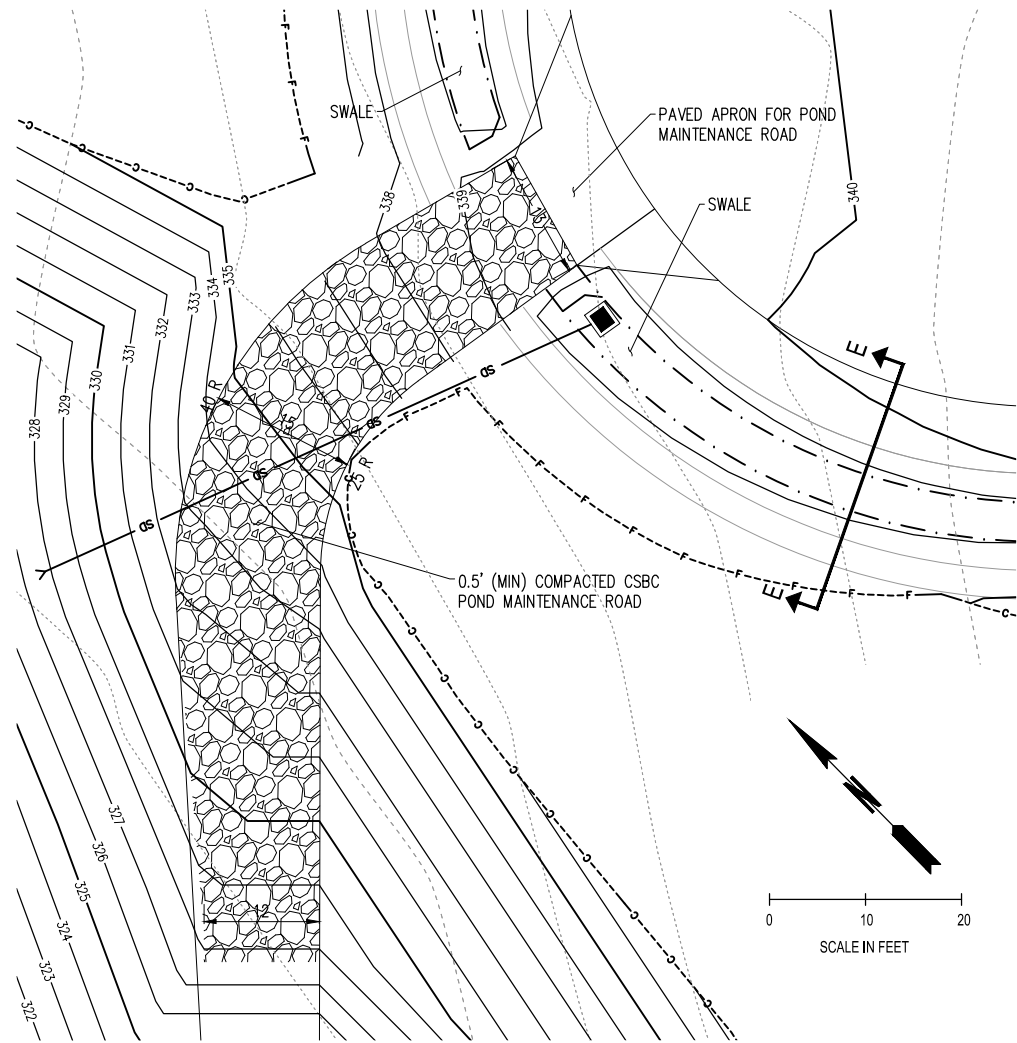
Date _____ Telephone _____ FAX _____

State of Washington Contractor's License No. _____

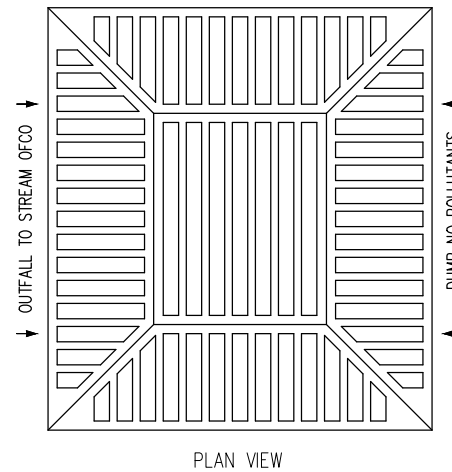
Federal Tax ID # _____ e-mail address: _____

Employment Security Department No. _____

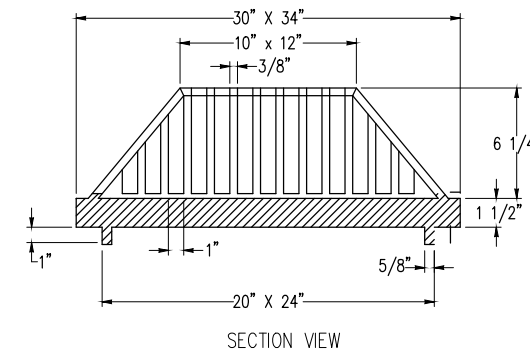
T. 23 N., R. 01 W., S. 21, W.M.



POND MAINTENANCE ACCESS ROAD



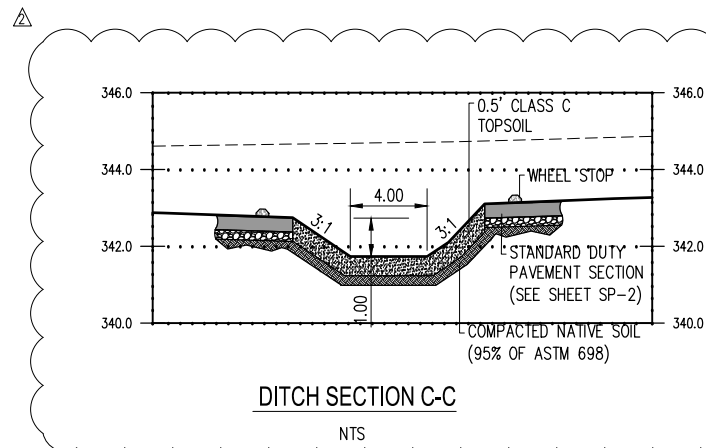
PLAN VIEW



SECTION VIEW

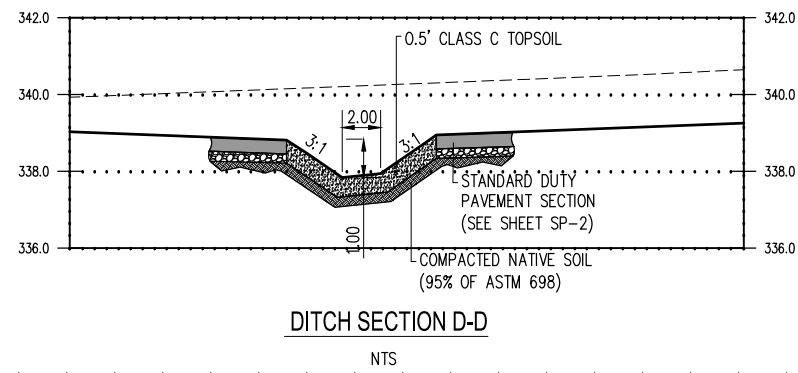
SPECIFICATIONS
 MANUFACTURER: OLYMPIC FOUNDRY INC.
 MATERIAL: DUCTILE IRON ASTM A536, CL 80-55-06
 APPROXIMATE WEIGHT: 100 LBS.
 RATING: H-20
 PART NO. SM60BH

BEEHIVE GRATE FOR USE WITH SM60 30"X34" REV FRAME
 NTS



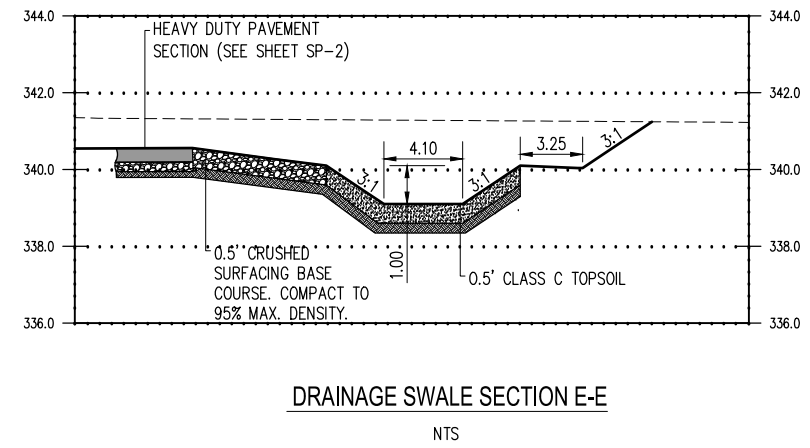
DITCH SECTION C-C

NTS



DITCH SECTION D-D

NTS



DRAINAGE SWALE SECTION E-E

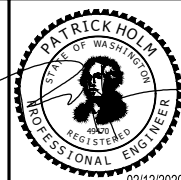
NTS

Mar 09, 2020 11:48:20am - User: moddle.knecht
 N:\PROJECTS\0238 MASON TRANSIT AUTHORITY\0238.05 MTA PARK AND RIDE DEVELOPMENT\CADD\BELFAIR\0738.05-SD-3-BUILDING

REVISIONS	DATE	BY	DESIGNED BY:	ISSUE DATE:
1 BID SET #1	02/12/20	SCJ	P. HOLM	02/12/2020
2 ADDENDUM #1	03/09/20	SCJ		

DRAWN BY:	JOB No.:
N. MAYFIELD	0738.05
CHECKED BY:	DRAWING FILE No.:
P. HOLM	0738.05-SD-3-B

ALL DIMENSIONS SHOWN IN FEET UNLESS OTHERWISE DESIGNATED



SCJ ALLIANCE
 CONSULTING SERVICES
 8730 TALLON LANE NE, SUITE 200, LACEY, WASHINGTON 98516
 P: 360-352-1465 F: 360-352-1509
 SCJALLIANCE.COM

PROJECT NAME:

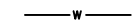






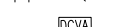

MASON TRANSIT AUTHORITY
 BELFAIR
 PARK AND RIDE DEVELOPMENT

DRAINAGE DETAILS

DRAWING No.: SD-3
 SHEET No.: 13 OF 84

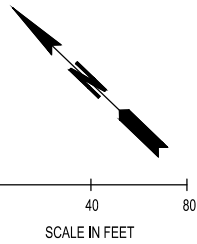
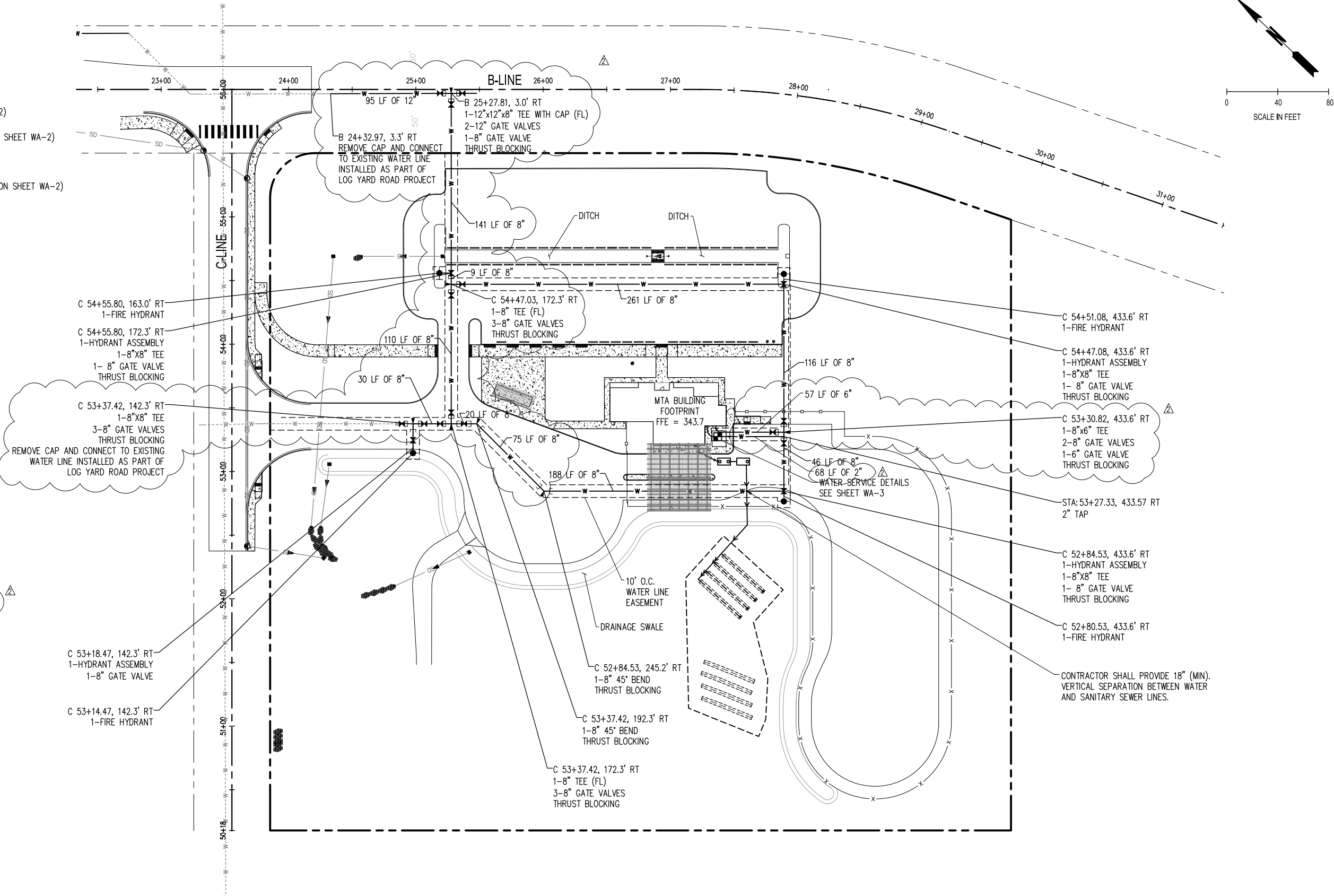
T. 23 N., R. 01 W., S. 21, W.M.

LEGEND

-  WATER LINE
-  METER (SEE DETAILS ON SHEET WA-2)
-  WATER VALVE (SEE DETAILS ON SHEET WA-2)
-  FIRE HYDRANT (SEE DETAIL ON SHEET WA-2)
-  THRUST BLOCKING (SEE DETAIL ON SHEET WA-2)
-  FIRE DEPARTMENT CONNECTION (SEE DETAIL ON SHEET WA-2)
-  FITTINGS WITH THRUST BLOCKING
-  DOUBLE CHECK VALVE ASSEMBLY (SEE DETAIL ON SHEET WA-2)
-  WATER LINE EASEMENT

GENERAL NOTES

1. THE LOCATION AND DESCRIPTIONS OF EXISTING UNDERGROUND UTILITIES SHOWN ON THESE CONSTRUCTION DRAWINGS ARE COMPILED FROM AVAILABLE RECORDS, FIELD SURVEYS OF ONE CALL UTILITY LOCATE, AND/OR ABOVE GROUND FEATURES. THE SURVEYOR OR UTILITY COMPANIES DO NOT GUARANTEE THE ACCURACY OR THE COMPLETENESS OF SUCH RECORDS. CONTRACTOR SHALL FIELD VERIFY LOCATIONS OF ALL EXISTING UTILITIES PRIOR TO CONSTRUCTION.
2. CONTRACTOR SHALL FIELD VERIFY LOCATION AND DEPTH OF ALL EXISTING UTILITIES WHERE NEW FACILITIES CROSS. CONTRACTOR SHALL BE RESPONSIBLE FOR EXPOSING POTENTIAL CONFLICTS FAR ENOUGH AHEAD OF CONSTRUCTION TO MAKE NECESSARY GRADE MODIFICATION WITHOUT DELAYING THE WORK. IF GRADE MODIFICATION IS NECESSARY, CONTRACTOR SHALL NOTIFY THE DESIGN ENGINEER, AND THE DESIGN ENGINEER SHALL OBTAIN APPROVAL FROM THE COUNTY ENGINEER PRIOR TO CONSTRUCTION. ALL UTILITY CROSSING SHALL BE POTHoled AS NECESSARY PRIOR TO EXCAVATING OR BORING TO ALLOW THE CONTRACTOR TO PREVENT GRADE OR ALIGNMENT CONFLICTS.
3. ALL WATER AND/OR SEWER LINE EXTENSIONS SHALL BE DESIGNED AND INSTALLED IN ACCORDANCE WITH THE CITY'S DESIGN STANDARDS.
4. TESTING IS REQUIRED FOR ALL GRAVITY SEWER LINES, AND MANHOLES PER THE CITY OF SHELTON DESIGN AND CONSTRUCTION STANDARD 5.140A AND B.
5. ALL WATER LINE EXTENSIONS SHALL BE CONSTRUCTED PER BELFAIR WATER DISTRICT DEVELOPER EXTENSION MANUAL.




Mar 09, 2020 11:48:46am - User: moddle.knecht
 K:\PROJECTS\0238 MASON TRANSIT AUTHORITY\0238.05 MTA PARK AND RIDE DEVELOPMENT\CADD\BELFAIR\0738.05-WA-1-EDWG

Δ	REVISIONS	DATE	BY	DESIGNED BY:	ISSUE DATE:
1	BID SET #1	02/12/20	SCJ	P. HOLM	02/12/2020
2	ADDENDUM #1	03/09/20	SCJ		

DRAWN BY:	N. MAYFIELD	JOB No.:	0738.05
CHECKED BY:	P. HOLM	DRAWING FILE No.:	0738.05-WA-1-B

ALL DIMENSIONS SHOWN IN FEET UNLESS OTHERWISE DESIGNATED




SCJ ALLIANCE
CONSULTING SERVICES

8730 TALLON LANE NE, SUITE 200, LACEY, WASHINGTON 98516
P: 360-352-1465 F: 360-352-1509
SCJALLIANCE.COM

PROJECT NAME:



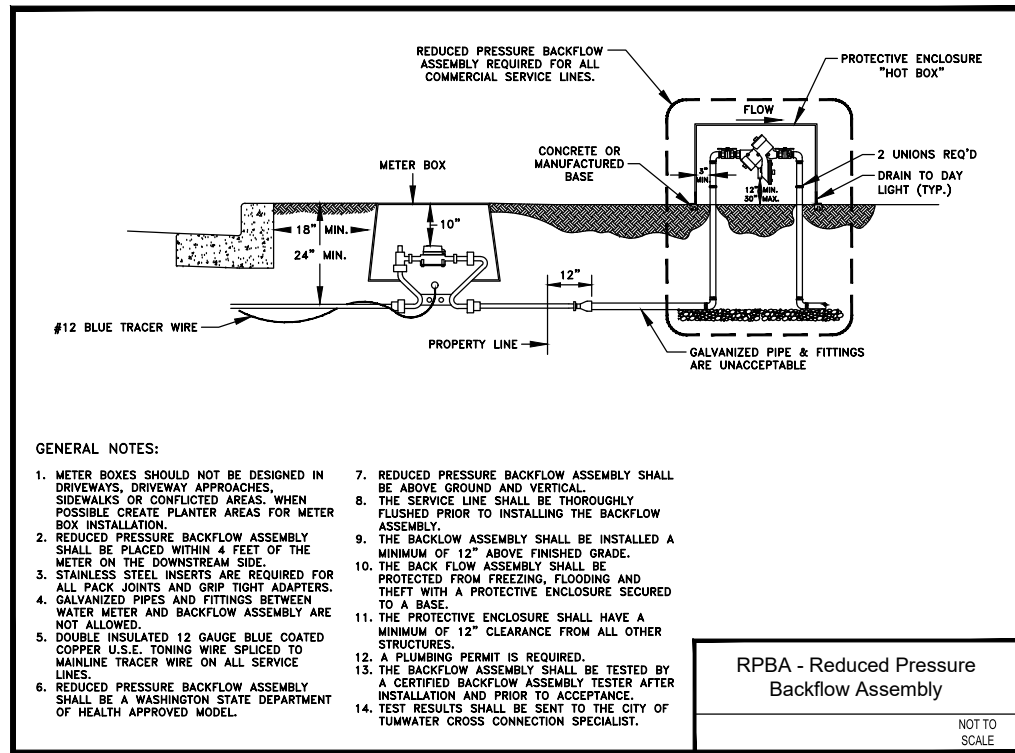
MASON TRANSIT AUTHORITY
BELFAIR
PARK AND RIDE DEVELOPMENT

WATER SYSTEM PLAN

DRAWING No.: WA-1

SHEET No.: 25 OF 84

Mar 09, 2020 11:48:54am - User: moddle.knecht
 K:\PROJECTS\0238 MASON TRANSIT AUTHORITY\0238.05 MTA PARK AND RIDE DEVELOPMENT\CADD\BELFAIR\0738.05-WA-2-EDWG

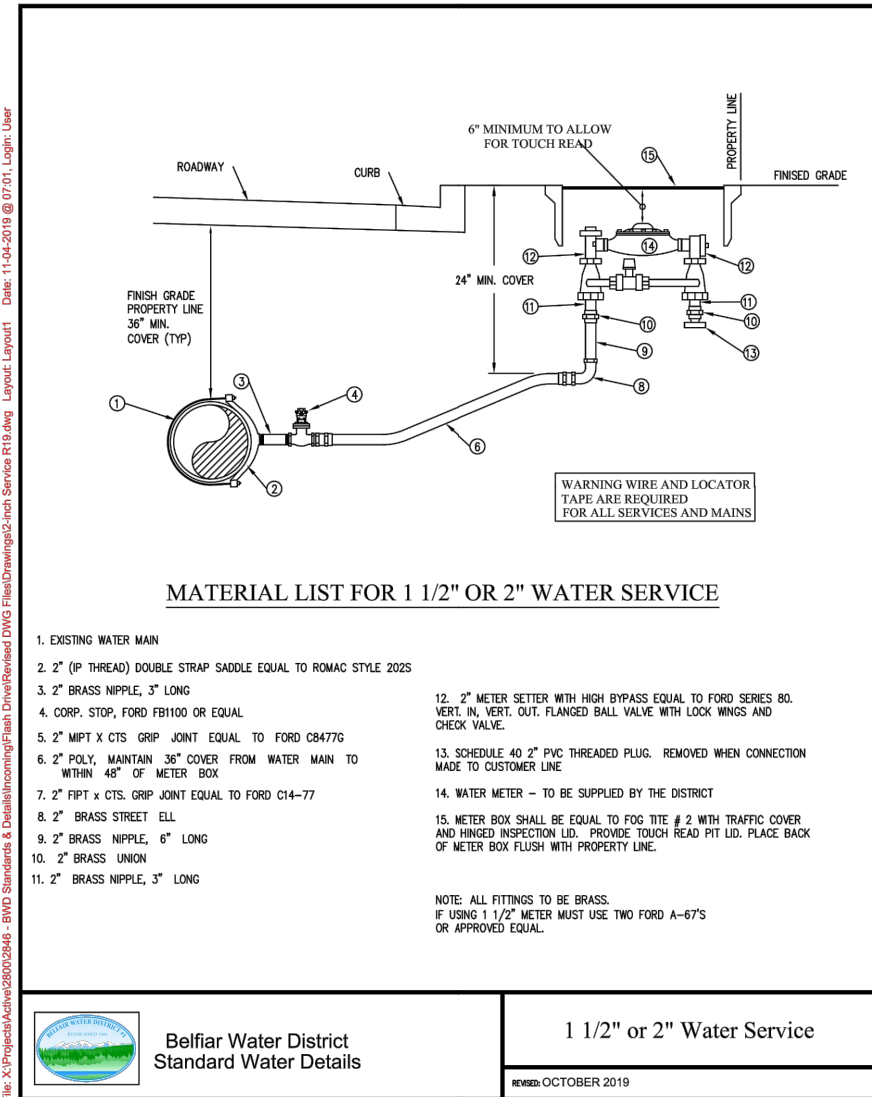


GENERAL NOTES:

1. METER BOXES SHOULD NOT BE DESIGNED IN DRIVEWAYS, DRIVEWAY APPROACHES, SIDEWALKS OR CONFLICTED AREAS. WHEN POSSIBLE CREATE PLANTER AREAS FOR METER BOX INSTALLATION.
2. REDUCED PRESSURE BACKFLOW ASSEMBLY SHALL BE PLACED WITHIN 4 FEET OF THE METER ON THE DOWNSTREAM SIDE.
3. STAINLESS STEEL INSERTS ARE REQUIRED FOR ALL PACK JOINTS AND GRIP TIGHT ADAPTERS.
4. GALVANIZED PIPES AND FITTINGS BETWEEN WATER METER AND BACKFLOW ASSEMBLY ARE NOT ALLOWED.
5. DOUBLE INSULATED 12 GAUGE BLUE COATED COPPER U.S.E. TONING WIRE SPLICED TO MAINLINE TRACER WIRE ON ALL SERVICE LINES.
6. REDUCED PRESSURE BACKFLOW ASSEMBLY SHALL BE A WASHINGTON STATE DEPARTMENT OF HEALTH APPROVED MODEL.
7. REDUCED PRESSURE BACKFLOW ASSEMBLY SHALL BE ABOVE GROUND AND VERTICAL.
8. THE SERVICE LINE SHALL BE THOROUGHLY FLUSHED PRIOR TO INSTALLING THE BACKFLOW ASSEMBLY.
9. THE BACKFLOW ASSEMBLY SHALL BE INSTALLED A MINIMUM OF 12" ABOVE FINISHED GRADE.
10. THE BACK FLOW ASSEMBLY SHALL BE PROTECTED FROM FREEZING, FLOODING AND THEFT WITH A PROTECTIVE ENCLOSURE SECURED TO A BASE.
11. THE PROTECTIVE ENCLOSURE SHALL HAVE A MINIMUM OF 12" CLEARANCE FROM ALL OTHER STRUCTURES.
12. A PLUMBING PERMIT IS REQUIRED.
13. THE BACKFLOW ASSEMBLY SHALL BE TESTED BY A CERTIFIED BACKFLOW ASSEMBLY TESTER AFTER INSTALLATION AND PRIOR TO ACCEPTANCE.
14. TEST RESULTS SHALL BE SENT TO THE CITY OF TUMWATER CROSS CONNECTION SPECIALIST.

RPBA - Reduced Pressure Backflow Assembly

NOT TO SCALE



MATERIAL LIST FOR 1 1/2" OR 2" WATER SERVICE

1. EXISTING WATER MAIN
2. 2" (P THREAD) DOUBLE STRAP SADDLE EQUAL TO ROMAC STYLE 202S
3. 2" BRASS NIPPLE, 3" LONG
4. CORP. STOP, FORD FB1100 OR EQUAL
5. 2" MIPT X CTS GRIP JOINT EQUAL TO FORD CB477G
6. 2" POLY, MAINTAIN 36" COVER FROM WATER MAIN TO WITHIN 48" OF METER BOX
7. 2" FIPT X CTS. GRIP JOINT EQUAL TO FORD C14-77
8. 2" BRASS STREET ELL
9. 2" BRASS NIPPLE, 6" LONG
10. 2" BRASS UNION
11. 2" BRASS NIPPLE, 3" LONG
12. 2" METER SETTER WITH HIGH BYPASS EQUAL TO FORD SERIES 80. VERT. IN, VERT. OUT, FLANGED BALL VALVE WITH LOCK WINGS AND CHECK VALVE.
13. SCHEDULE 40 2" PVC THREADED PLUG. REMOVED WHEN CONNECTION MADE TO CUSTOMER LINE
14. WATER METER - TO BE SUPPLIED BY THE DISTRICT
15. METER BOX SHALL BE EQUAL TO FOG TITE # 2 WITH TRAFFIC COVER AND HINGED INSPECTION LID. PROVIDE TOUCH READ PIT LID. PLACE BACK OF METER BOX FLUSH WITH PROPERTY LINE.

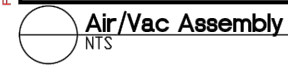
NOTE: ALL FITTINGS TO BE BRASS. IF USING 1 1/2" METER MUST USE TWO FORD A-67'S OR APPROVED EQUAL.



Belfair Water District
Standard Water Details

1 1/2" or 2" Water Service

REVISED: OCTOBER 2019



Δ	REVISIONS	DATE	BY	DESIGNED BY:	ISSUE DATE:
1	BID SET #1	02/12/20	SCJ	P. HOLM	02/12/2020
2	ADDENDUM #1	03/09/20	SCJ		

ALL DIMENSIONS SHOWN IN FEET UNLESS OTHERWISE DESIGNATED

SCJ ALLIANCE
CONSULTING SERVICES

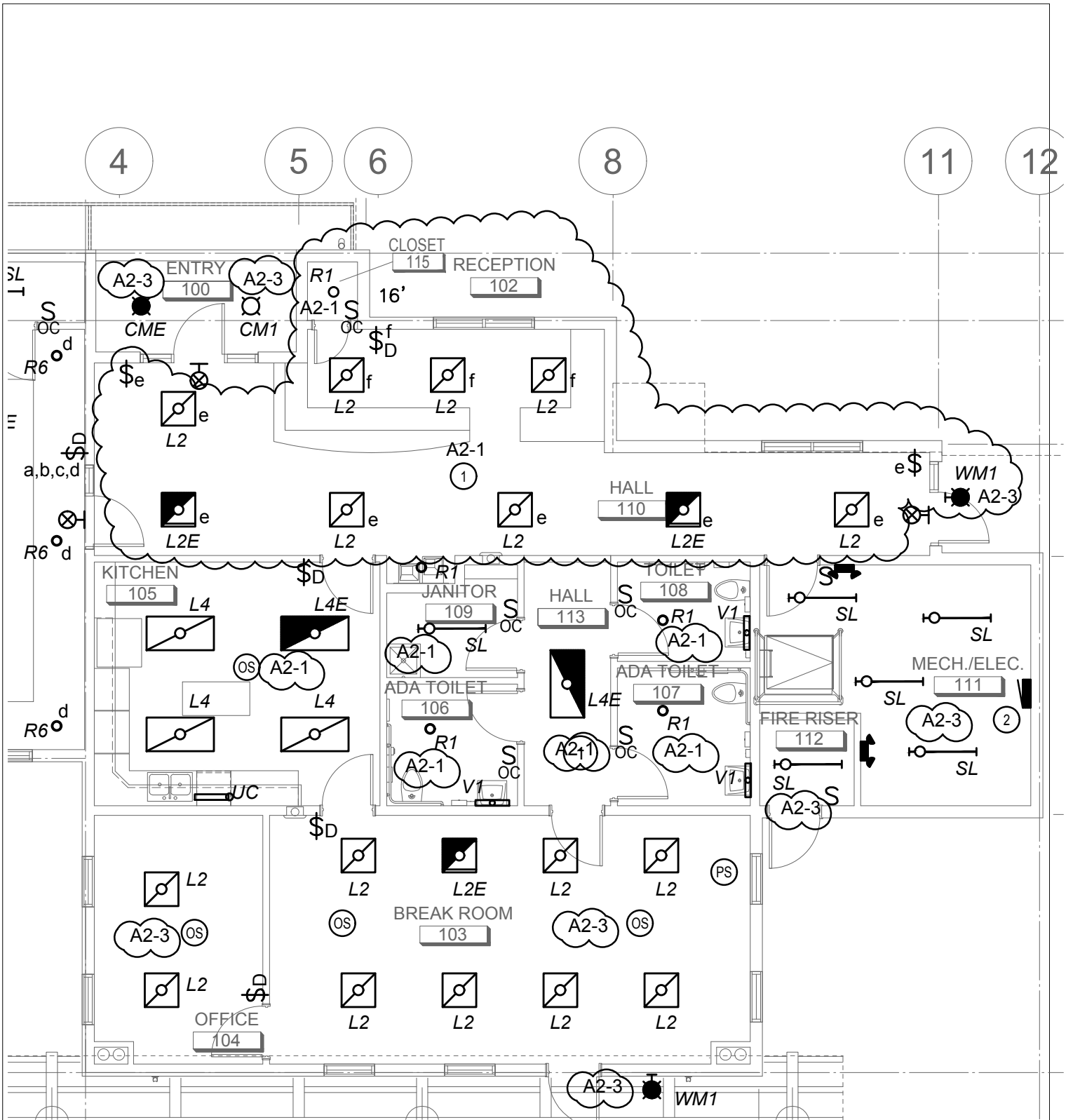
8730 TALLON LANE NE, SUITE 200, LACEY, WASHINGTON 98516
P: 360-352-1465 F: 360-352-1509
SCJALLIANCE.COM

PROJECT NAME:

MASON TRANSIT AUTHORITY
BELFAIR
PARK AND RIDE DEVELOPMENT

WATER DETAILS

DRAWING No.: WA-3
SHEET No.: 27 OF 84



SCALE: 1/8" = 1'-0"



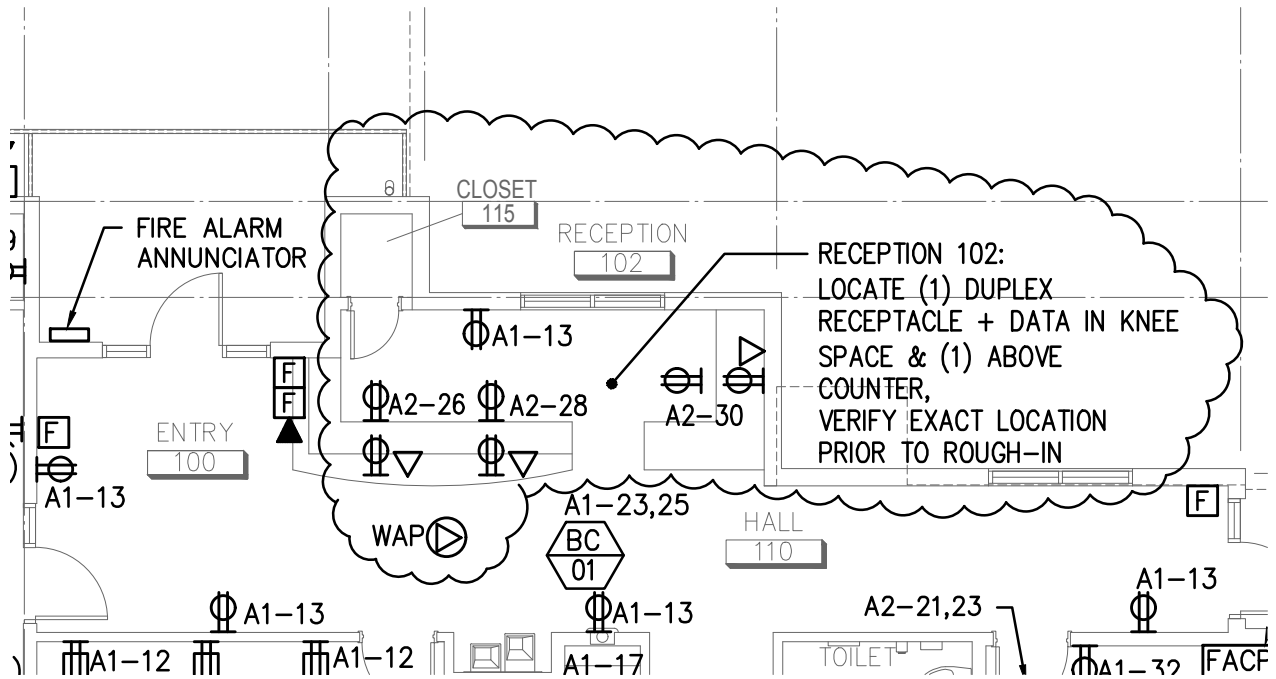
MASON TRANSIT AUTHORITY
 BELFAIR PARK AND RIDE
 DEVELOPMENT PROJECT
 BELFAIR, WASHINGTON 98528

**PARTIAL LIGHTING PLAN
 ADDENDA NO. 1**

HULTZ & BHU
 engineers inc

1111 Fawcett Ave Suite 100 Tacoma, WA 98402
 Phone: (253) 383-3257 Fax: (253) 383-3283
 general@hultzbhu.com Job Number: 17-167

Project No. 17-167
Sheet ESK-1
Ref Sheet E2.1
Date 5 MAR 2020



SCALE: 1/8" = 1'-0"



MASON TRANSIT AUTHORITY

BELFAIR PARK AND RIDE
DEVELOPMENT PROJECT
BELFAIR, WASHINGTON 98528

**PARTIAL POWER & SIGNAL PLAN
ADDENDA NO. 1**

HULTZ & BHU
engineers inc

1111 Fawcett Ave Suite 100 Tacoma, WA 98402
Phone: (253) 383-3257 Fax: (253) 383-3283
general@hultzbhu.com Job Number: 17-167

Project No.	17-167
Sheet	ESK-2
Ref Sheet	E3.1
Date	5 MAR 2020