

Bid Addendum No. 1 for:

MASON TRANSIT AUTHORITY – PEAR ORCHARD PARK AND RIDE PROJECT

To: All Prospective Bidders

From: Patrick Holm, PE

RE: MASON TRANSIT AUTHORITY – PEAR ORCHARD PARK AND RIDE PROJECT

All Bidders are required to make the following substitutions to the Bid Documents. Below is a description of the revisions made to the Contract Documents.

Plans:

Replace the following Plan Sheets with new Plan Sheets:

Sheet CV:

- Added Northing and Easting to Datum control points.
- Updated Sheet Index

Sheet EC-1:

- Revised silt fence.
- Clarified limits of Boot Hill and added Note regarding soil contamination.
- Added note for contractor to coordinate with CenturyLink for manhole adjustment.

Sheet SP-1:

- Revised parking lot curb return geometry.
- Revised pond geometry.
- Updated sign callouts.

Sheet SP-3:

- Revised sign details.

Sheet SD-1:

- Revised pond extents and updated pond cross section.
- Re-aligned storm line to go under sidewalk.
- Revised south parking lot grading.

Sheet SD-2:

- Revised pond extents and updated pond cross section.
- Re-aligned storm line.
- Updated pipe outfall information.

Sheet SD-3:

- Revised parking lot curb return geometry.
- Updated curb ramp callouts.

Sheet UT-1:

- Revised water connection per new storm layout and curb return.

Sheet IL-1:

- Updated illumination construction notes.
- Updated lighting schedule.

Sheet IL-3:

- Added detail sheet.

Sheet LS-1:

- Revised landscaping to match pond modifications.

Sheet LS-2:

- Revised landscaping to match pond modifications.

Sheet LS-3:

- Revised Planting Schedule.

Sheet LS-4:

- Revised irrigation to match pond modifications.

Bid Package:

- Invitation to Bid
 - Revised bid due date to March 1, 2019.

Special Provisions:

- Section 1-02.12 Public Opening of Proposals**
 - Revised bid opening date to March 1, 2019.

- Section 8-20.2 Materials**
 - Provided pole type clarification.
 - Updated McGraw Edison fixture model number.

T. 20 N., R. 03 W., S 20, W.M.

PEAR ORCHARD PARK AND RIDE DEVELOPMENT

BUS SHELTER WILL PART OF
SEPARATE DEFERRED SUBMITTAL

SHELTON, WASHINGTON
MASON COUNTY

OWNER/APPLICANT

MASON TRANSIT AUTHORITY
601 WEST FRANKLIN ST
SHELTON, WA 98584
(360) 426-9434
CONTACT: DANETTE BRANNIN, GENERAL MANAGER

CONSULTANTS

SCJ ALLIANCE
8730 TALLON LANE NE, STE 200
LACEY, WA 98516
(360) 352-1465
CONTACT: PATRICK HOLM, P.E.

SURVEY:
MTN2COAST, LLC
1506 FAIRVIEW ST SE
OLYMPIA, WA 98501
(360) 239-1497
CONTACT: BLAIR PRIGGE, PLS., E.I.T.

UTILITIES

POWER:
PUD3
(360) 426-8255 EXT. 5232
CONTACT: JUSTIN HOLZGROVE

PHONE:
CENTURYLINK
(360) 956-7692
CONTACT: MICHELLE PALMER

STORMWATER:
CITY OF SHELTON
525 W COTA ST.
SHELTON, WA 98584
CONTACT: SCOTT WHITING 360-432-5190

DATUM

HORIZONTAL - WASHINGTON STATE PLANE
COORDINATES, SOUTH ZONE, NAD 83/91 BASED ON
TIES TO WSDOT MONUMENTS GP23003-20 NO. 2224
AND GP23003-33 NO. 8044.

VERTICAL - NAVD 88 BASED ON TIES TO WSDOT
MONUMENTS GP23003-20 NO. 2224, ELEVATION=47.58.

POINT #501
EASTING: 997901.6620
NORTHING: 696757.6880
ELEVATION: 47.575

POINT #502
EASTING: 994255.2910
NORTHING: 695735.4950
ELEVATION: 16.977

SURVEY NOTES

- INSTRUMENT USED: SOKKIA SRX 3 TOTAL STATION AND TOPCON GR5 GPS.
- SURVEY COMPLETED 10/2/2016

UTILITIES SHOWN HEREON ARE FROM MAPPING VISIBLE
SURFACE APPURTENANCES, REFERRING TO AS-BUILT
RECORDS AND MAPPING UTILITY PAINT MARKS FROM A
UTILITY LOCATING SERVICE. BURIED UTILITIES ARE ONLY
SHOWN AS APPROXIMATE AND SHOULD BE VERIFIED
BEFORE CONSTRUCTION.

SITE DATA

SITE ADDRESS (APPROX.): 376 EAST PINE STREET, SHELTON WA, 98585
PARCEL NUMBER: 32020-21-60010

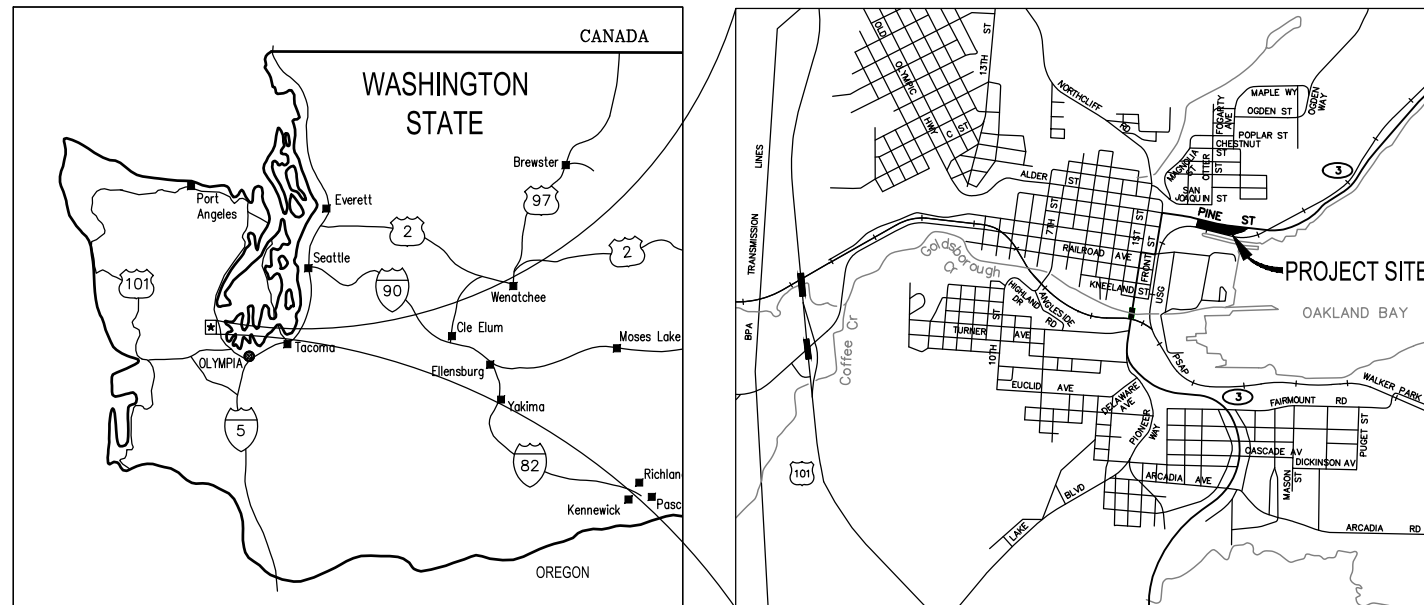
SHEET INDEX		
SHEET NUMBER	SHEET TITLE	SHEET DESCRIPTION
1	CV	COVER
2	GEN-1	GENERAL NOTES
3	EC-1	REMOVAL AND TESC PLAN
4	EC-2	REMOVAL AND TESC DETAILS
5	SP-1	SITE PLAN & HORIZONTAL CONTROL PLAN
6	SP-2	SITE PLAN & HORIZONTAL CONTROL PLAN
7	SP-3	SITE PLAN DETAILS
8	SD-1	GRADING AND DRAINAGE PLAN
9	SD-2	GRADING AND DRAINAGE PLAN
10	SD-3	RAMP GRADING DETAILS
11	SD-4	DRAINAGE DETAILS
12	UT-1	UTILITY PLAN
13	UT-2	UTILITY DETAILS
14	IL-1	LIGHTING AND SECURITY PLAN
15	IL-2	LIGHTING AND SECURITY DETAILS
16	IL-3	LIGHTING AND SECURITY DETAILS
17	LS-1	LANDSCAPE PLAN
18	LS-2	LANDSCAPE PLAN
19	LS-3	PLANTING SCHEDULE, NOTES, & DETAILS
20	LS-4	IRRIGATION
21	LS-5	IRRIGATION
22	LS-6	IRRIGATION, NOTES, & DETAILS
23	TC-1	TRAFFIC CONTROL PLAN

NOTES

- WORK FOR THIS PROJECT SHALL MEET OR EXCEED THE PROJECT SPECIFICATIONS AND THE 2018 WSDOT STANDARD SPECIFICATIONS FOR ROAD, BRIDGE, AND MUNICIPAL CONSTRUCTION WHICH ARE HEREBY REFERENCED AS A PART OF THESE PLANS.
- ALL SITE WORK MUST COMPLY WITH INTERNATIONAL BUILDING CODE, APPENDIX J AND SHELTON MUNICIPAL CODE, TITLE 13 AND CITY OF SHELTON DESIGN AND CONSTRUCTION AND DEVELOPMENT STANDARDS.
- THE DESIGN SHOWN IS BASED UPON THE ENGINEER'S UNDERSTANDING OF THE EXISTING CONDITIONS. THE EXISTING CONDITIONS SHOWN ON THIS PLAN SET ARE BASED UPON SURVEY, PREPARED BY MTN 2 COAST LLC. THE CONTRACTOR IS RESPONSIBLE FOR VERIFYING FIELD CONDITIONS PRIOR TO BIDDING THE PROPOSED WORK IMPROVEMENTS. IF CONFLICTS ARE DISCOVERED, THE CONTRACTOR SHALL NOTIFY THE OWNER OR ENGINEER PRIOR TO INSTALLATION OF ANY PORTION OF THE WORK WHICH WOULD BE AFFECTED.

CAUTION - NOTICE TO CONTRACTOR

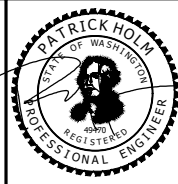
THE CONTRACTOR IS SPECIFICALLY CAUTIONED THAT THE LOCATION OF EXISTING UTILITIES AS SHOWN ON THESE PLANS IS BASED ON THE PROJECT SURVEY AND OTHER RECORDS OF UTILITIES. THE INFORMATION IS NOT TO BE RELIED ON AS BEING EXACT OR COMPLETE. THE CONTRACTOR SHALL CALL 1-800-424-5555 (OR 811) 48 HOURS PRIOR TO PLANNED EXCAVATION.
TO REQUEST UTILITY LOCATES, CALL 1-800-424-5555 (OR 811).



Feb 14, 2019 3:21:23pm - User: nick.mayfield
 K:\PROJECTS\0238 MASON TRANSIT AUTHORITY\0238.05 MTA PARK AND RIDE DEVELOPMENT\CADD\YEAR ORCHARD\0238.05-CV-1-PODING

REVISIONS	DATE	BY	DESIGNED BY:	ISSUE DATE:
△			P. HOLM	APRIL 2018
△	02-15-2019	SCJ		
			DRAWN BY:	JOB No.:
			N.MAYFIELD	0738.05
			CHECKED BY:	DRAWING FILE No.:
			S. SAWYER	0738.5-CV-1-PO

ALL DIMENSIONS
SHOWN IN FEET
UNLESS OTHERWISE
DESIGNATED



SCJ ALLIANCE
CONSULTING SERVICES
8730 TALLON LANE NE, SUITE 200, LACEY, WASHINGTON 98516
P: 360-352-1465 F: 360-352-1509
SCJALLIANCE.COM

PROJECT NAME:

MASON TRANSIT AUTHORITY
PEAR ORCHARD
PARK AND RIDE DEVELOPMENT

COVER

DRAWING No.:
CV

SHEET No.:

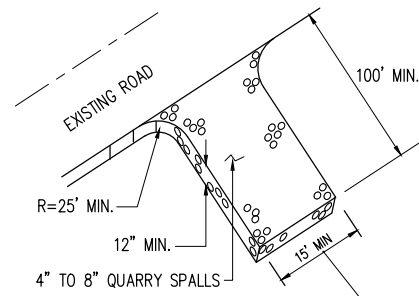
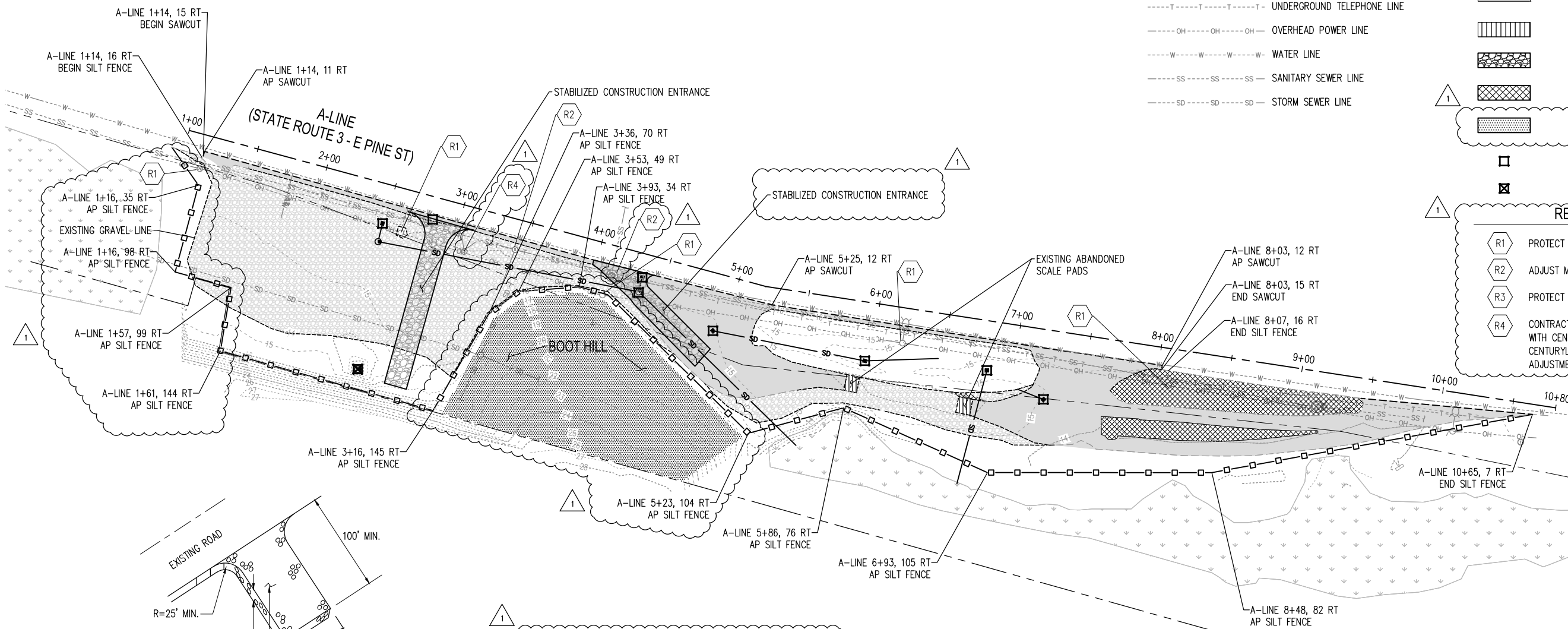
1 OF 23

EXISTING UTILITY LEGEND

- TELEPHONE PEDESTAL
- POWER POLE
- POWER POLE WITH TRANSFORMER
- POWER POLE WITH LUMINAIRE
- GUY ANCHOR
- SANITARY SEWER MANHOLE
- GRAVEL
- EDGE OF GRAVEL
- UNDERGROUND TELEPHONE LINE
- OVERHEAD POWER LINE
- WATER LINE
- SANITARY SEWER LINE
- STORM SEWER LINE

LEGEND

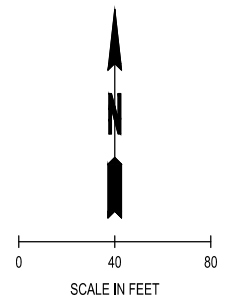
- EXISTING MAJOR CONTOUR
 - EXISTING MINOR CONTOUR
 - PROPERTY LINE
 - SILT FENCE (SEE DETAIL ON SHEET EC-2)
 - SAWCUT LINE
 - SCHEDULE A STORM SEWER PIPE 12 IN. DIAM.
 - ASPHALT CONC. REMOVAL
 - REMOVE CEMENT CONC. PAVEMENT
 - STABILIZED CONSTRUCTION ENTRANCE
 - GRAVEL REMOVAL
 - BOOT HILL (SEE NOTE 1 - THIS SHEET)
 - STORM DRAIN INLET PROTECTION
 - EROSION CONTROL AT CULVERT ENDS
- REMOVAL KEY NOTES**
- R1 PROTECT AND PRESERVE UTILITY POLE
 - R2 ADJUST MANHOLE TO GRADE
 - R3 PROTECT & PRESERVE
 - R4 CONTRACTOR TO COORDINATE MANHOLE ADJUSTMENT WITH CENTURYLINK. CONTRACTOR SHALL GIVE CENTURYLINK TWO WEEKS NOTICE PRIOR TO ADJUSTMENT.



CONSTRUCTION ENTRANCE
NTS

NOTE

1. BOOT HILL CONTAINS CONTAMINATED SOILS AS DOCUMENTED IN THE INSIGHT GEOLOGIC GEOTECHNICAL REPORT. CONTRACTOR SHALL NOT EXCAVATE IN THE LIMITS OF THE HILL. CONTRACTOR SHALL COMPLY WITH ECOLOGY REQUIREMENTS PER THE CONSTRUCTION STORMWATER GENERAL PERMIT.

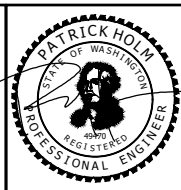


File 15_2019_8_34;29am - User: nick.mayfield
 H:\PROJECTS\1028 MASON TRANSIT AUTHORITY\1028-05 MTA PARK AND RIDE DEVELOPMENT\CADD\YEAR ORCHARD\0738.5-EC-1-ROADING

NO.	REVISIONS	DATE	BY	DESIGNED BY:	ISSUE DATE:
1	BID ADDENDUM	02-15-2019	SCJ	P.HOLM	APRIL 2018

DRAWN BY:	JOB No.:
N.MAYFIELD	0738.05
CHECKED BY:	DRAWING FILE No.:
S.SAWYER	0738.5-EC-1-PO

ALL DIMENSIONS
SHOWN IN FEET
UNLESS OTHERWISE
DESIGNATED



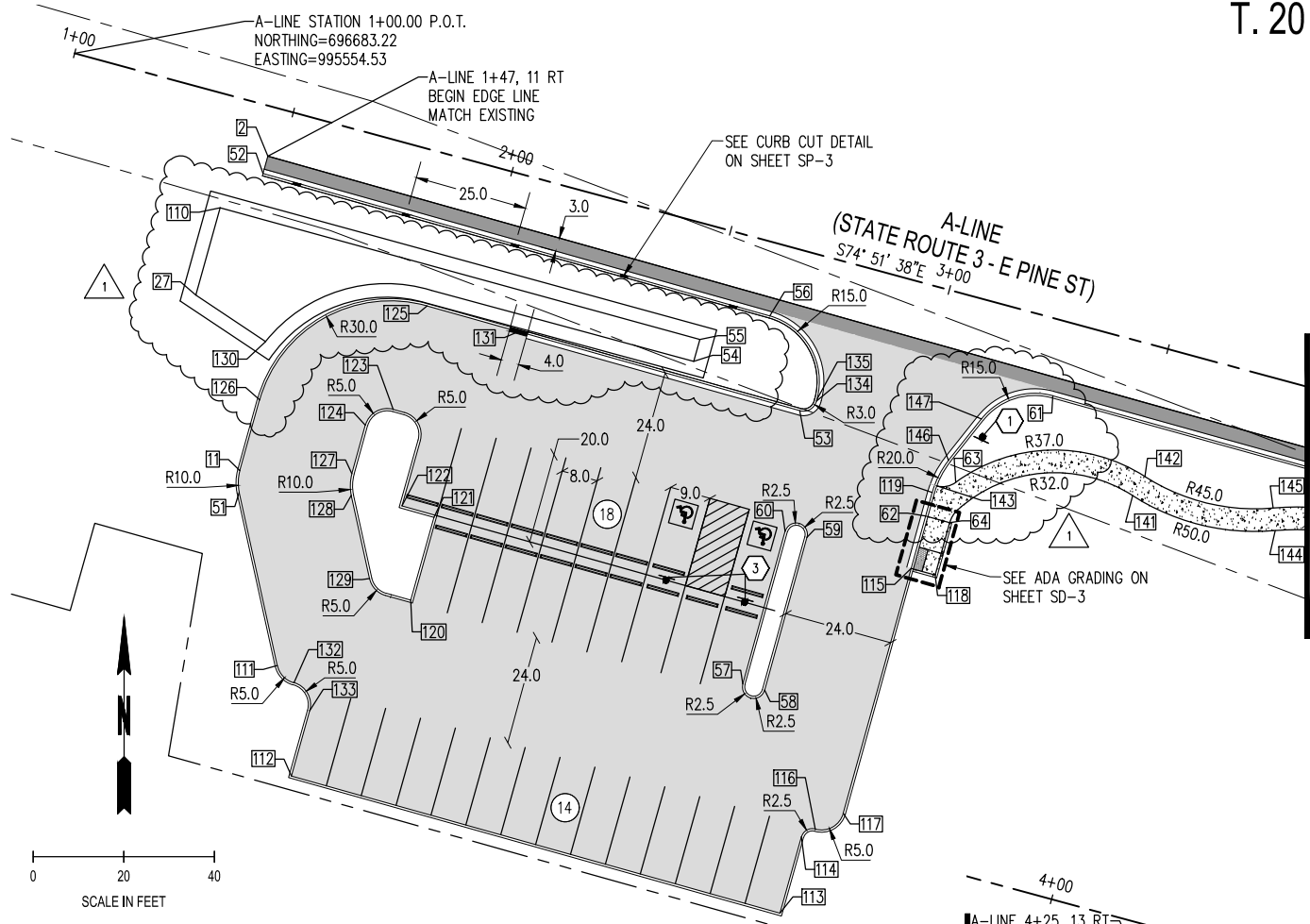
SCJ ALLIANCE
CONSULTING SERVICES
8730 TALLON LANE NE, SUITE 200, LACEY, WASHINGTON 98516
P: 360-352-1465 F: 360-352-1509
SCJALLIANCE.COM

PROJECT NAME:
 MTA

MASON TRANSIT AUTHORITY
PEAR ORCHARD
PARK AND RIDE DEVELOPMENT
REMOVAL AND TESC PLAN

DRAWING No.:
EC-1
SHEET No.:
3 OF 23

T. 20 N., R. 03 W., S 20, W.M.



MATCHLINE CONTINUE THIS SHEET

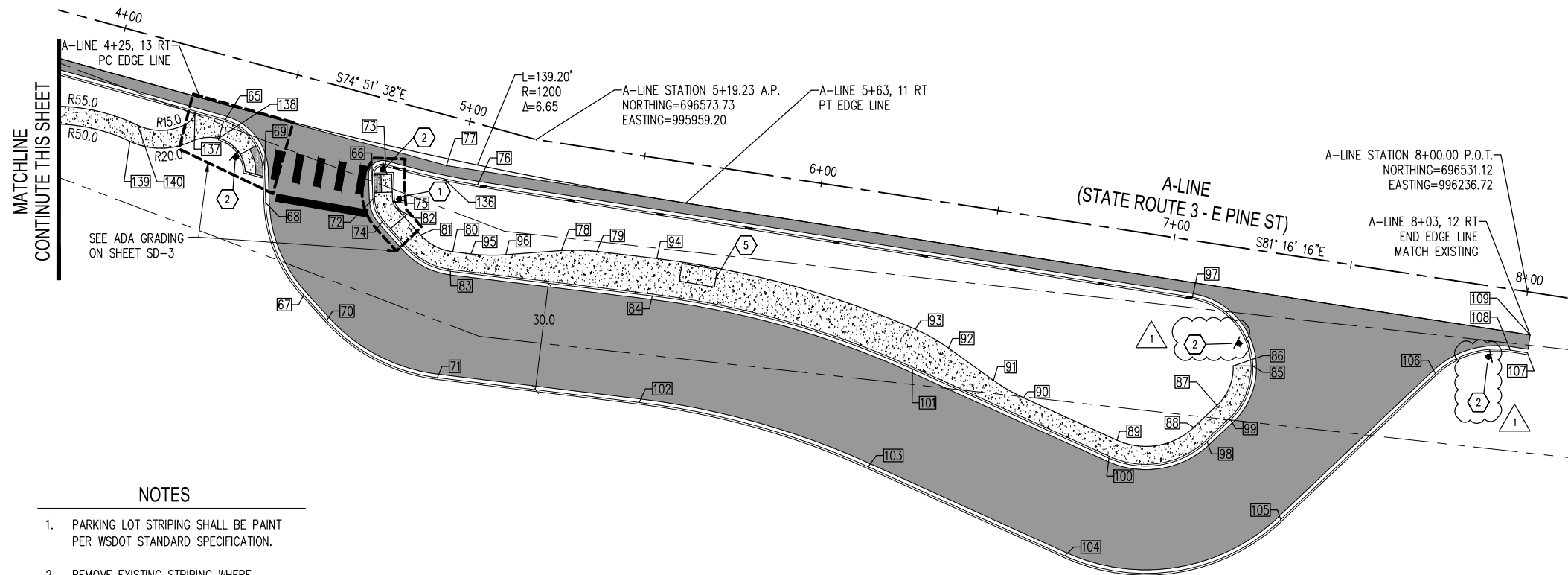
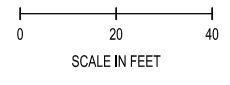
POINT TABLE		
POINT #	NORTHING	EASTING
2	696660.51	995597.15
11	696591.11	995590.98
27	696629.84	995581.29
51	696586.29	995590.85
52	696656.69	995596.09
53	696604.36	995714.55
54	696615.23	995691.17
55	696620.06	995692.52
56	696625.26	995707.96
57	696544.00	995702.00
58	696542.67	995706.81
59	696576.40	995716.16
60	696577.73	995711.34
61	696607.63	995770.42
62	696581.08	995742.35
63	696588.55	995749.01
64	696579.61	995747.65
65	696579.30	995872.19
66	696561.10	995913.32
67	696530.27	995894.08

POINT TABLE		
POINT #	NORTHING	EASTING
68	696556.08	995883.47
69	696565.35	995883.16
70	696523.14	995900.55
71	696507.11	995931.51
72	696557.09	995913.46
73	696566.82	995917.03
74	696550.71	995916.05
75	696556.45	995918.98
76	696561.05	995942.74
77	696566.45	995934.07
78	696542.68	995966.24
79	696542.45	995976.19
80	696542.35	995935.82
81	696547.00	995926.84
82	696554.41	995920.12
83	696536.89	995935.15
84	696529.97	995991.69
85	696510.39	996159.78
86	696510.39	996154.28
87	696499.35	996149.74

POINT TABLE		
POINT #	NORTHING	EASTING
88	696493.21	996143.25
89	696489.62	996121.80
90	696501.48	996095.64
91	696506.36	996087.20
92	696515.38	996074.63
93	696520.67	996065.33
94	696540.39	995992.97
95	696541.72	995940.94
96	696541.50	995950.69
97	696529.65	996142.88
98	696489.22	996147.03
99	696495.36	996153.52
100	696484.61	996119.54
101	696509.54	996064.52
102	696500.19	995988.05
103	696482.21	996052.14
104	696457.29	996107.15
105	696467.41	996167.63
106	696508.30	996210.89
107	696514.09	996236.70

POINT TABLE		
POINT #	NORTHING	EASTING
108	696514.83	996231.89
109	696519.03	996237.43
110	696649.13	995586.64
111	696548.08	995599.25
112	696523.69	995602.36
113	696493.41	995710.19
114	696510.26	995714.92
115	696569.51	995739.15
116	696511.99	995718.00
117	696515.47	995724.17
118	696568.04	995744.45
119	696586.30	995743.80
120	696562.51	995628.71
121	696580.80	995633.85
122	696583.31	995626.76
123	696604.63	995624.84
124	696601.15	995618.67
125	696627.46	995632.30
126	696606.76	995595.33
127	696590.44	995615.70

POINT TABLE		
POINT #	NORTHING	EASTING
128	696585.62	995615.57
129	696567.30	995619.60
130	696619.60	995596.66
131	696621.79	995652.49
132	696544.30	995602.95
133	696538.13	995606.41
134	696606.44	995718.25
135	696606.81	995718.36
136	696562.76	995933.31
137	696581.16	995863.65
138	696574.10	995870.36
139	696573.22	995845.47
140	696577.74	995847.62
141	696585.58	995788.05
142	696589.79	995790.75
143	696587.78	995744.73
144	696577.87	995819.51
145	696582.85	995819.06
146	696593.39	995747.41
147	696602.51	995754.65



MATCHLINE CONTINUE THIS SHEET

LEGEND

- PROPERTY LINE
- ACCESSIBLE PARKING (SEE DETAIL ON SHEET SP-3)
- WHEEL STOP PER DETAIL (SEE DETAIL ON SHEET SP-2)
- CEMENT CONCRETE TYPE C-1 CURB (SEE DETAIL ON SHEET SP-2)
- CURB CUT
- STALL COUNT
- CONCRETE SIDEWALK (SEE DETAIL ON SHEET SP-2)
- ASPHALT PAVING (SEE DETAIL ON SHEET SP-2)
- HEAVY DUTY ASPHALT PAVING (SEE DETAIL ON SHEET SP-2)
- CROSSWALK LAYOUT (SEE DETAIL ON SHEET SP-3)
- PAINTED EDGE LINE (PER WSDOT STD. PLAN M-20.10)

CONSTRUCTION NOTES

- 1 INSTALL STOP SIGN (SEE DETAIL ON SHEET SP-3)
- 2 INSTALL DO NOT ENTER SIGN AND TRANSIT ONLY SIGN (SEE DETAIL ON SHEET SP-3)
- 3 INSTALL ACCESSIBLE PARKING SIGN AND VAN ACCESSIBLE SIGN (SEE DETAIL ON SHEET SP-3)
- 4 INSTALL ACCESSIBLE PARKING SIGN (SEE DETAIL ON SHEET SP-3)
- 5 HANDI HUT MODEL #4-2R BUS SHELTER. CONTRACTOR SHALL COORDINATE SHELTER ORDER WITH MTA AND PERMIT WITH CITY OF SHELTON. CONTRACTOR TO INSTALL.

STALL COUNT SUMMARY

PEAR ORCHARD PARKING LOT
 EXISTING: AVERAGES 12 CARS PER DAY
 PROPOSED STALLS: 32 STALLS TO BE CONSTRUCTED

NOTES

1. PARKING LOT STRIPING SHALL BE PAINT PER WSDOT STANDARD SPECIFICATION.
2. REMOVE EXISTING STRIPING WHERE CONFLICTING WITH NEW STRIPING.

File 14, 2019, 3:22:11pm - User: nlsk.mofield
 N:\PROJECTS\0238 MASON TRANSIT AUTHORITY\0238.05 MTA PARK AND RIDE DEVELOPMENT\CADD\YEAR ORCHARD\0238.5-SP-1-PODING

REVISIONS	DATE	BY	DESIGNED BY:	ISSUE DATE:
△			P. HOLM	APRIL 2018
△	02-15-2019	SCJ	N.MAYFIELD	JOB No.: 0738.05
			S. SAWYER	DRAWING FILE No.: 0738.5-SP-1-PO

ALL DIMENSIONS SHOWN IN FEET UNLESS OTHERWISE DESIGNATED

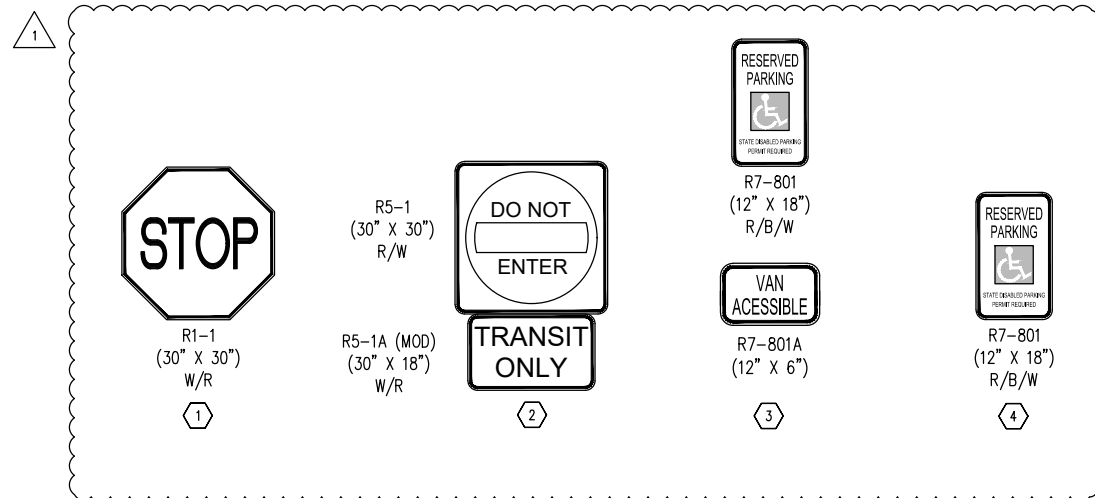
SCJ ALLIANCE
 CONSULTING SERVICES
 8730 TALLON LANE NE, SUITE 200, LACEY, WASHINGTON 98516
 P: 360-352-1465 F: 360-352-1509
 SCJALLIANCE.COM

PROJECT NAME:

MASON TRANSIT AUTHORITY
 PEAR ORCHARD
 PARK AND RIDE DEVELOPMENT

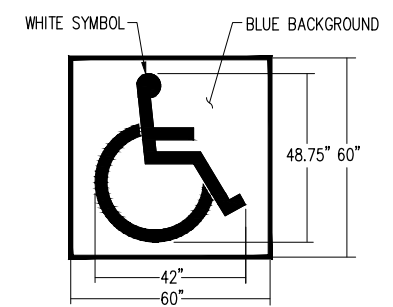
SITE PLAN & HORIZONTAL CONTROL PLAN

DRAWING No.: SP-1
 SHEET No.: 5 OF 23



SIGNING DETAIL
NTS

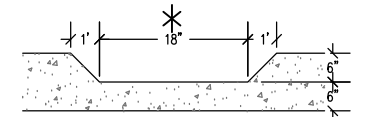
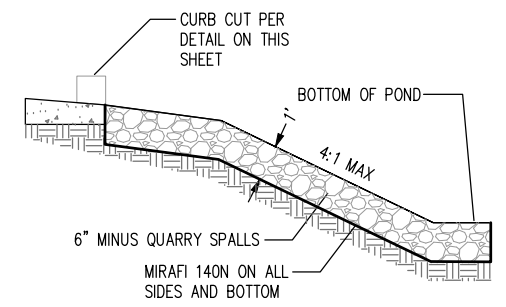
SIGN NOTE:
ALL SIGNS SHALL BE 2" SOLID GROUTED STEEL AND MANUFACTURED AND INSTALLED PER 2018 WSDOT STANDARD SPECIFICATIONS IN ACCORDANCE WITH THE STATE OF WASHINGTON SIGN FABRICATION MANUAL AND/OR THE MANUAL OF UNIFORM TRAFFIC CONTROL DEVICES, 2009 EDITION. ALL SIGN SUPPORTS SHALL BE PER WSDOT STANDARD PLAN G-24.50.



ACCESSIBLE PARKING SYMBOL
LOCATE AT EDGE OF PARKING SPACE

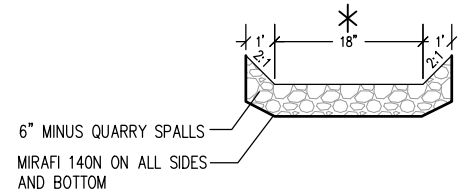
NOTES:
1. SEE SITE PLAN FOR COMPLETE LAYOUT.
2. THESE DETAILS ARE FOR REFERENCE AND DIMENSION CONTROL ONLY.
3. ALL DIMENSIONS ARE TO CENTER OF STRIPE UNLESS OTHERWISE INDICATED.

STRIPING AND SYMBOL (PAINT)
NTS



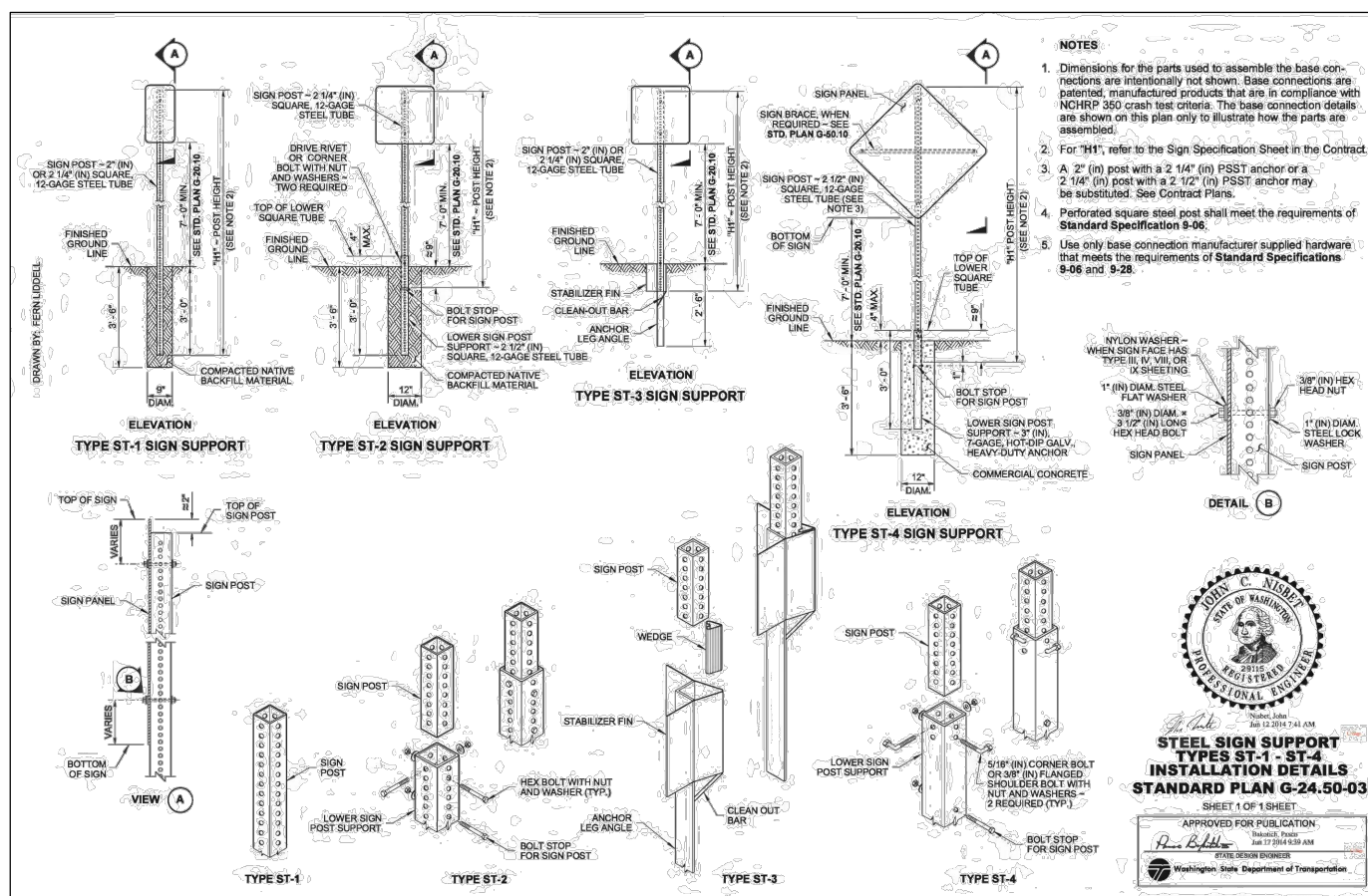
* UNLESS OTHERWISE NOTED ON PLANS

CURB CUT
NTS

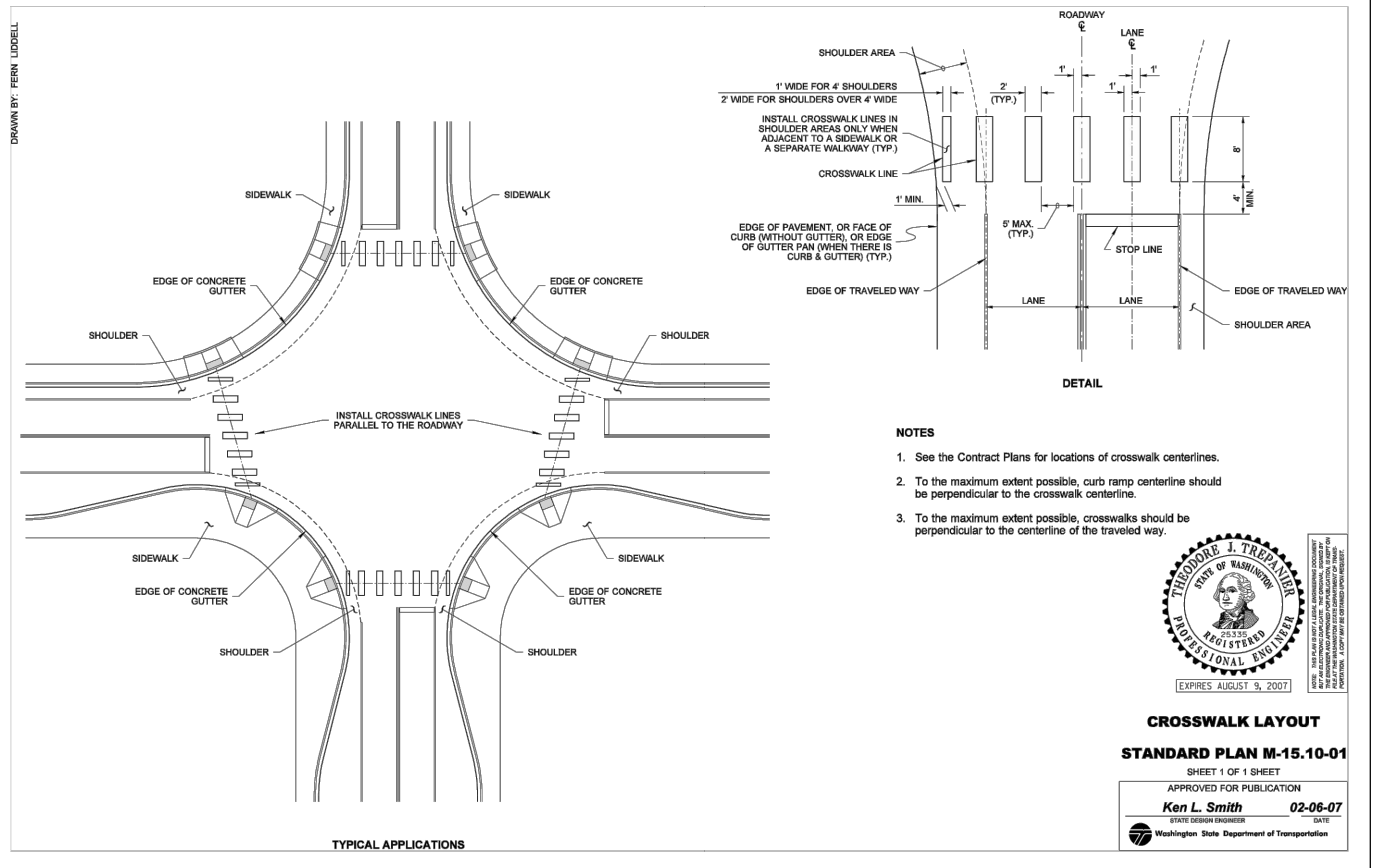


* UNLESS OTHERWISE NOTED ON PLANS

QUARRY SPALL SPILLWAY
NTS



STEEL SIGN SUPPORT TYPES ST-1 - ST-4 INSTALLATION DETAILS
STANDARD PLAN G-24.50-03
SHEET 1 OF 1 SHEET
APPROVED FOR PUBLICATION
Ken L. Smith
STATE DESIGN ENGINEER
Washington State Department of Transportation



NOTES:
1. See the Contract Plans for locations of crosswalk centerlines.
2. To the maximum extent possible, curb ramp centerline should be perpendicular to the crosswalk centerline.
3. To the maximum extent possible, crosswalks should be perpendicular to the centerline of the traveled way.

THEODORE J. TREMPER
STATE OF WASHINGTON
REGISTERED PROFESSIONAL ENGINEER
EXPIRES AUGUST 9, 2007

CROSSWALK LAYOUT
STANDARD PLAN M-15.10-01
SHEET 1 OF 1 SHEET
APPROVED FOR PUBLICATION
Ken L. Smith
STATE DESIGN ENGINEER
Washington State Department of Transportation

Feb 14, 2019 3:22:27pm - User: nick.mayfield
K:\PROJECTS\0238 MASON TRANSIT AUTHORITY\0238.05 MTA PARK AND RIDE DEVELOPMENT\0238.05-SP-3-RD.DWG

REVISIONS	DATE	BY	DESIGNED BY:	ISSUE DATE:
1	02-15-2019	SCJ	P. HOLM	APRIL 2018
2			N.MAYFIELD	JOB No.: 0738.05
			S. SAWYER	DRAWING FILE No.: 0738.5-SP-3-PO

ALL DIMENSIONS SHOWN IN FEET UNLESS OTHERWISE DESIGNATED

PATRICK HOLM
STATE OF WASHINGTON
REGISTERED PROFESSIONAL ENGINEER

SCJ ALLIANCE
CONSULTING SERVICES
8730 TALLON LANE NE, SUITE 200, LACEY, WASHINGTON 98516
P: 360-352-1465 F: 360-352-1509
SCJALLIANCE.COM

PROJECT NAME:

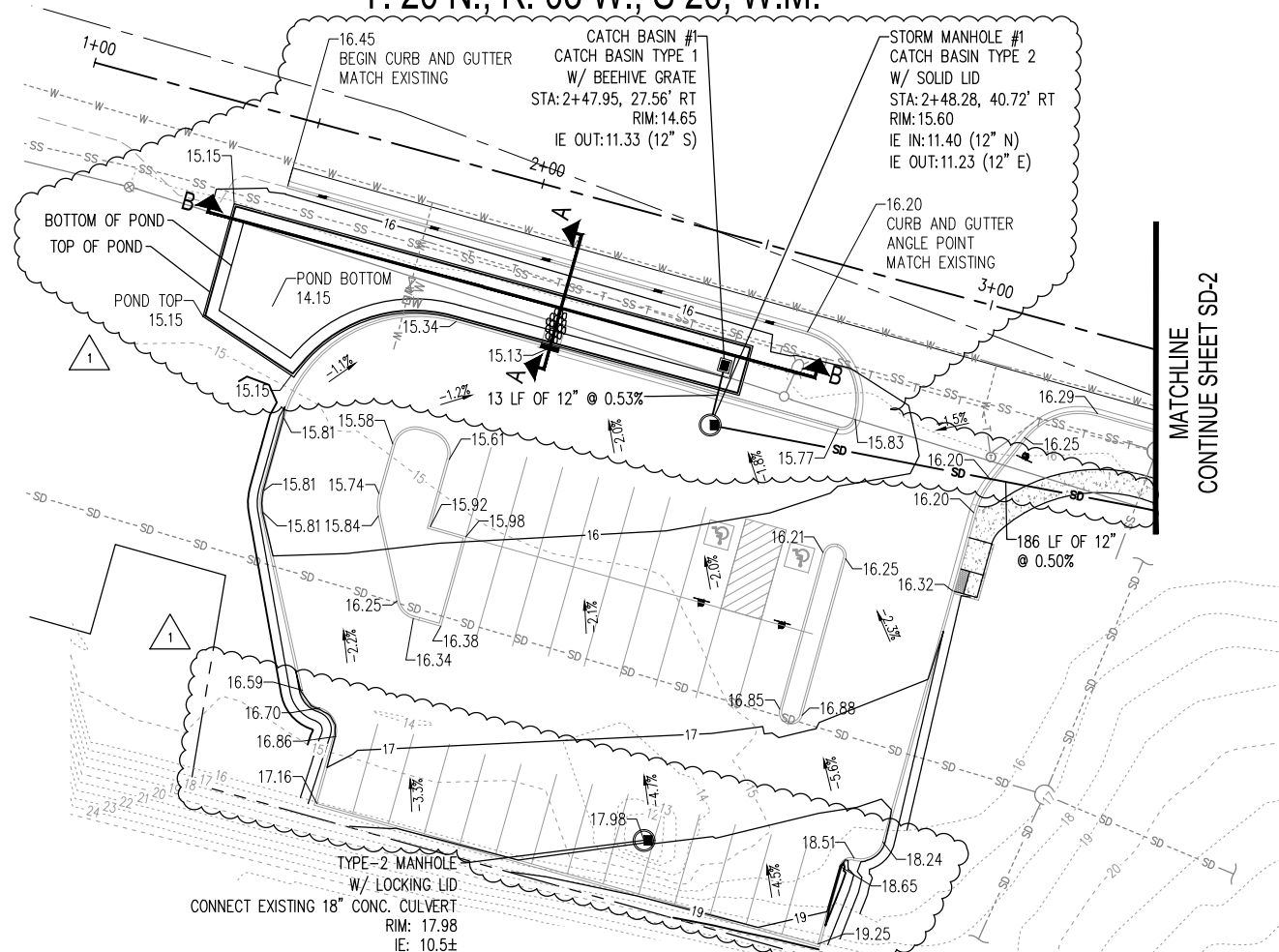
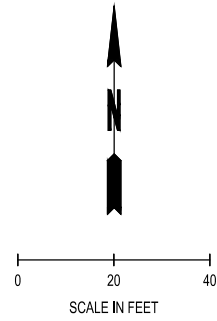
MTA

MASON TRANSIT AUTHORITY
PEAR ORCHARD
PARK AND RIDE DEVELOPMENT

SITE PLAN DETAILS

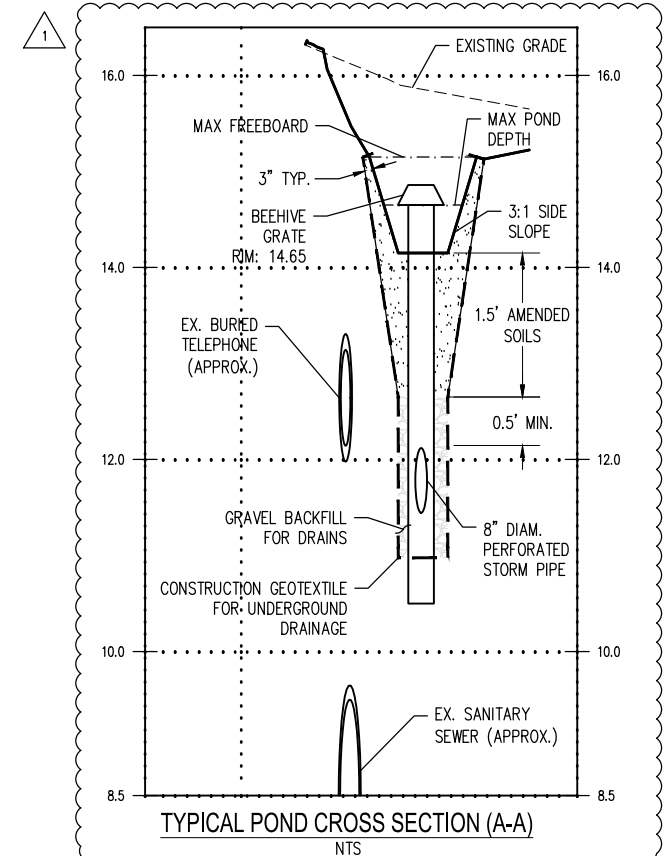
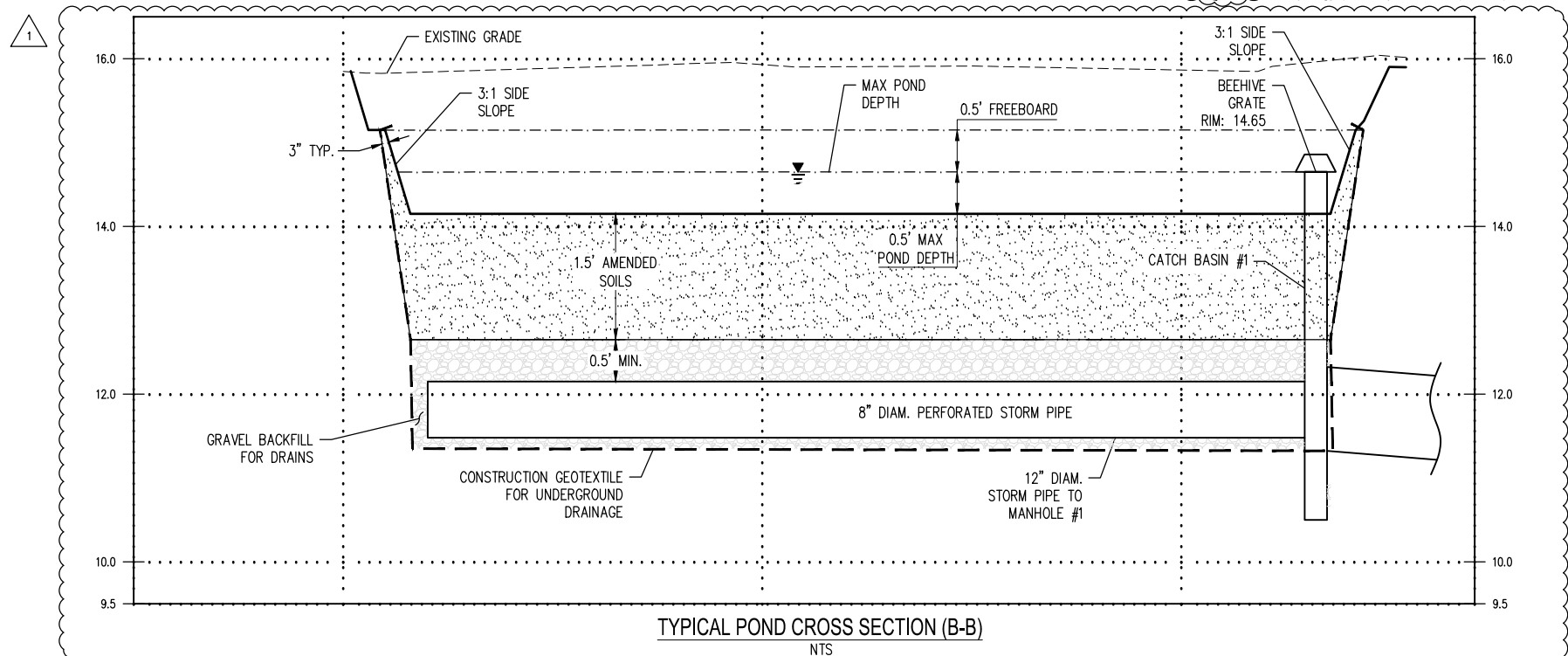
DRAWING No.: SP-3
SHEET No.: 7 OF 23

T. 20 N., R. 03 W., S 20, W.M.



- LEGEND**
- - - - - XX - - - - - EXISTING MAJOR CONTOUR
 - - - - - XX - - - - - EXISTING MINOR CONTOUR
 - — — — — XX — — — — — PROPOSED MAJOR CONTOUR
 - — — — — XX — — — — — PROPOSED MINOR CONTOUR
 - - - - - - - - - - - PROPOSED UTILITY EASEMENT (WATER, SEWER, STORM)
 - =====
=====
===== PROPOSED SWALE
 - SD — SCHEDULE A STORM SEWER PIPE 12 IN. DIAM.
 - XXX.XX SPOT ELEVATION
 - 0.00% SLOPE LABEL
 - ▣ CATCH BASIN TYPE 1 & 2 (PER WSDOT STD. DETAIL ON SD-4)
 - CATCH BASIN TYPE 2 (PER WSDOT STD. DETAIL ON SD-4)
 - ▨ 5'x6'x1' DEEP HAND PLACED RIPRAP
 - CURB CUT (PER DETAIL ON SP-3)

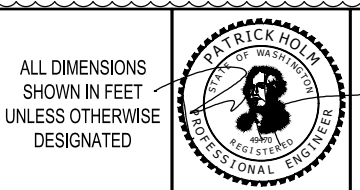
- NOTE:**
- SPOT ELEVATIONS ARE TO FLOWLINE NOT TOP OF CURB UNLESS NOTED OTHERWISE.
 - CONTRACTOR SHALL FIELD VERIFY ALL CATCH BASIN RIM AND INVERT ELEVATIONS PRIOR TO COMMENCEMENT OF CONSTRUCTION. CONTRACTOR SHALL CONTACT CIVIL ENGINEER IF THE ELEVATIONS ARE DIFFERENT THAN THOSE INDICATED ON THIS SHEET.



File 14, 2019, 3:22:48pm - User: nrmayfield
N:\PROJECTS\0238 MASON TRANSIT AUTHORITY\0238.05 MTA PARK AND RIDE DEVELOPMENT\CADD\YEAR 0\ORCHARD\0738.5-SD-1-PO.DWG

| REVISIONS | DATE | BY | DESIGNED BY: | ISSUE DATE: |
|-----------|------------|-----|--------------|----------------------------------|
| △ | 02-15-2019 | SCJ | P. HOLM | APRIL 2018 |
| △ | | | N.MAYFIELD | JOB No.: 0738.05 |
| | | | S. SAWYER | DRAWING FILE No.: 0738.5-SD-1-PO |

ALL DIMENSIONS SHOWN IN FEET UNLESS OTHERWISE DESIGNATED



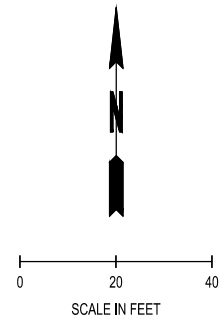
SCJ ALLIANCE
CONSULTING SERVICES
8730 TALLON LANE NE, SUITE 200, LACEY, WASHINGTON 98516
P: 360-352-1465 F: 360-352-1509
SCJALLIANCE.COM

PROJECT NAME:

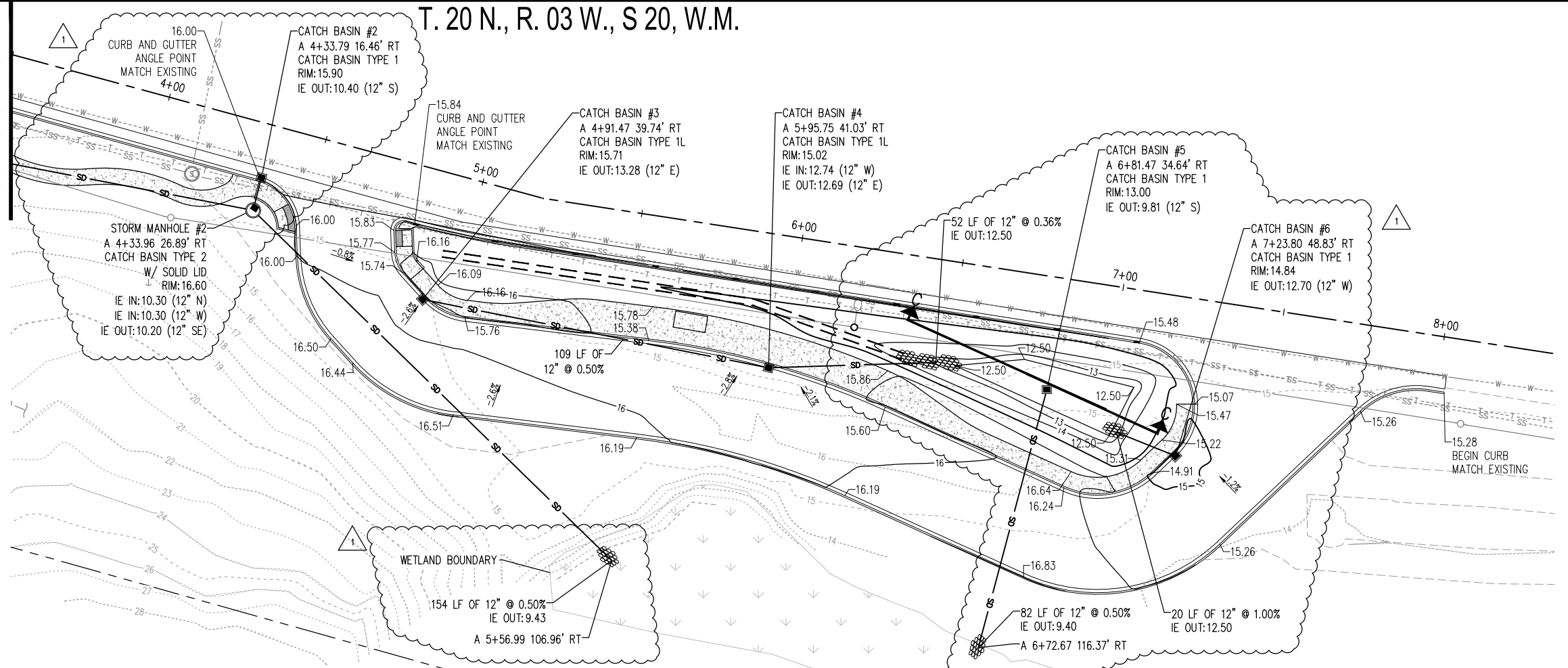
MASON TRANSIT AUTHORITY
PEAR ORCHARD
PARK AND RIDE DEVELOPMENT
GRADING AND DRAINAGE PLAN

DRAWING No.: SD-1
SHEET No.: 8 OF 23

T. 20 N., R. 03 W., S 20, W.M.



MATCHLINE
CONTINUE SHEET SD-1

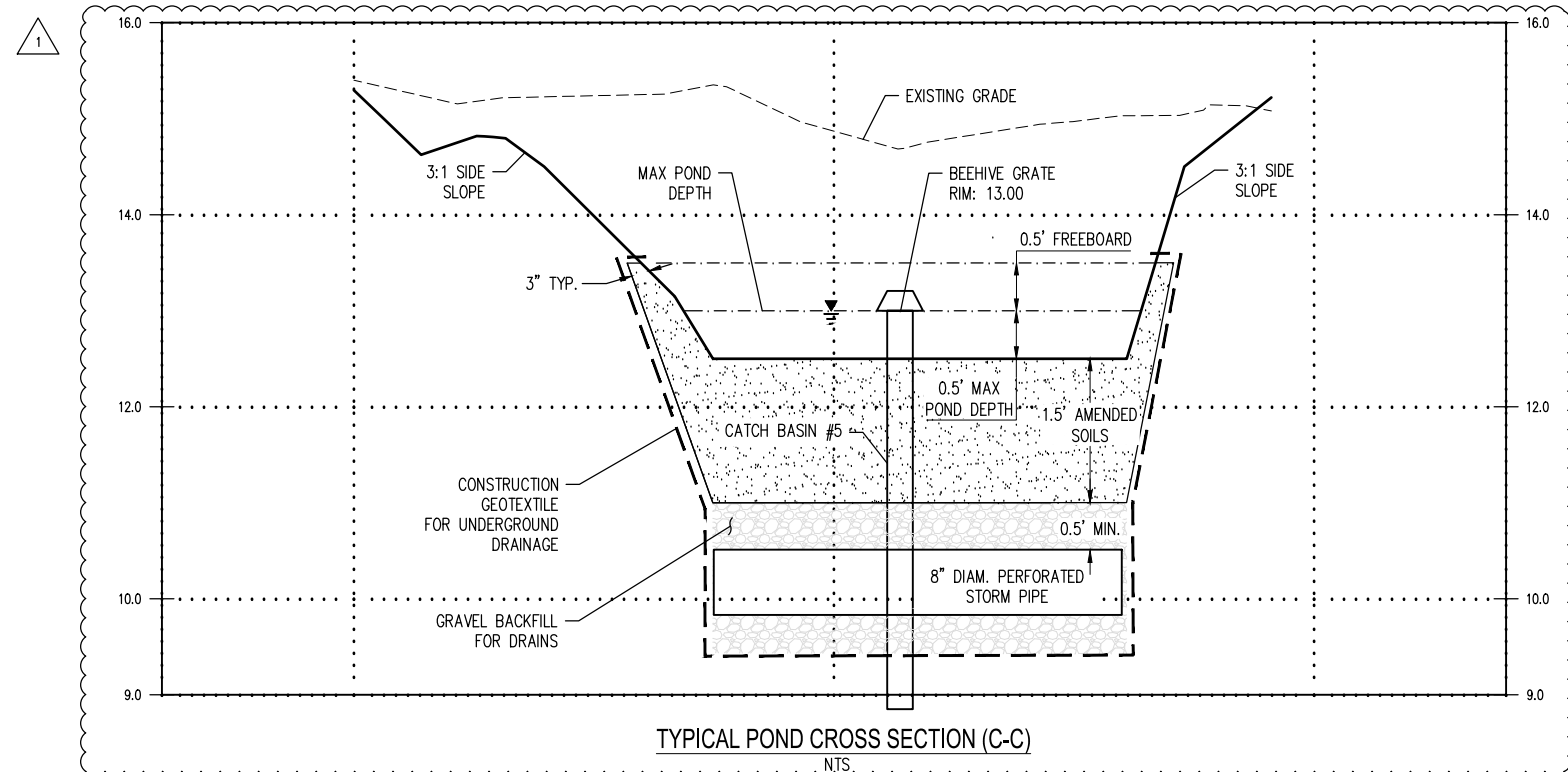


LEGEND

- XX--- EXISTING MAJOR CONTOUR
- XX--- EXISTING MINOR CONTOUR
- XX--- PROPOSED MAJOR CONTOUR
- XX--- PROPOSED MINOR CONTOUR
- - - - - PROPOSED UTILITY EASEMENT (WATER, SEWER, STORM)
- ==== PROPOSED SWALE
- SD SCHEDULE A STORM SEWER PIPE 12 IN. DIAM.
- XXX.XX SPOT ELEVATION
- 0.00% SLOPE LABEL
- CATCH BASIN TYPE 1 & 2 (PER WSDOT STD. DETAIL ON SD-4)
- CATCH BASIN TYPE 2 (PER WSDOT STD. DETAIL ON SD-4)
- 5'x6'x1' DEEP HAND PLACED RIPRAP
- CURB CUT (PER DETAIL ON SP-3)

NOTE:

1. SPOT ELEVATIONS ARE TO FLOWLINE NOT TOP OF CURB UNLESS NOTED OTHERWISE.
2. CONTRACTOR SHALL FIELD VERIFY ALL CATCH BASIN RIM AND INVERT ELEVATIONS PRIOR TO COMMENCEMENT OF CONSTRUCTION. CONTRACTOR SHALL CONTACT CIVIL ENGINEER IF THE ELEVATIONS ARE DIFFERENT THAN THOSE INDICATED ON THIS SHEET.



TYPICAL POND CROSS SECTION (C-C)
NTS

File 14, 2019, 3:22:59pm - User: nrmayfield
N:\PROJECTS\0238 MASON TRANSIT AUTHORITY\0238.05 MTA PARK AND RIDE DEVELOPMENT\CADD\YEAR 0\ORCHARD\0738.5-SD-2-PO.DWG

| REVISIONS | DATE | BY | DESIGNED BY: | ISSUE DATE: |
|-----------|------------|-----|--------------|-------------------|
| △ | | | P. HOLM | APRIL 2018 |
| △ | 02-15-2019 | SCJ | | |
| | | | DRAWN BY: | JOB No.: |
| | | | N.MAYFIELD | 0738.05 |
| | | | CHECKED BY: | DRAWING FILE No.: |
| | | | S. SAWYER | 0738.5-SD-2-PO |

ALL DIMENSIONS SHOWN IN FEET UNLESS OTHERWISE DESIGNATED



SCJ ALLIANCE
CONSULTING SERVICES
8730 TALLON LANE NE, SUITE 200, LACEY, WASHINGTON 98516
P: 360-352-1465 F: 360-352-1509
SCJALLIANCE.COM

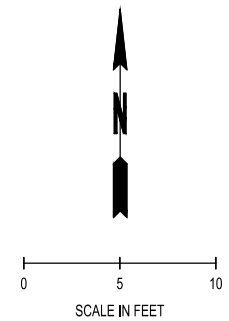
PROJECT NAME: 

MASON TRANSIT AUTHORITY
PEAR ORCHARD
PARK AND RIDE DEVELOPMENT
GRADING AND DRAINAGE PLAN

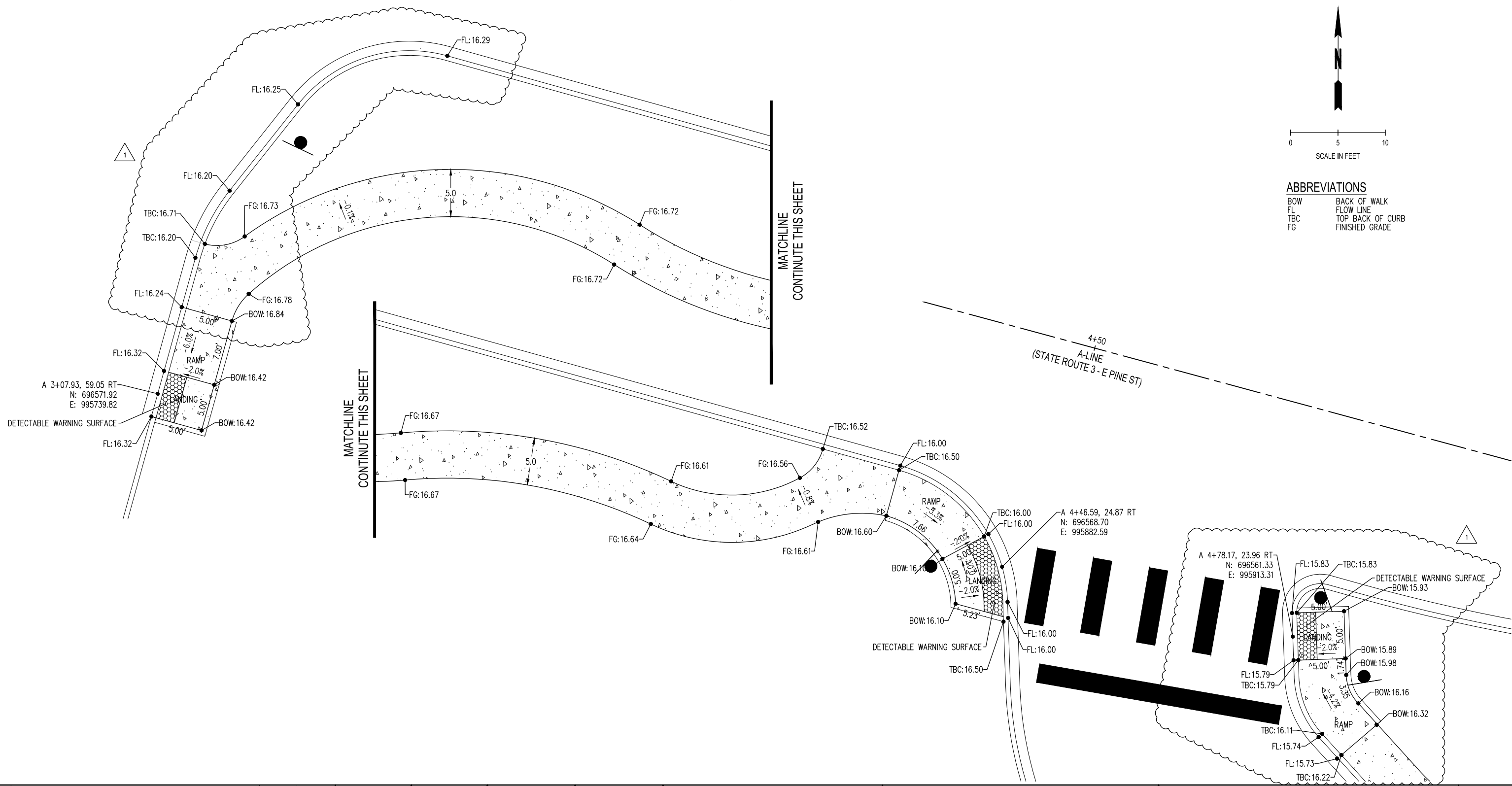
DRAWING No.: SD-2
SHEET No.: 9 OF 23

T. 20 N., R. 03 W., S 20, W.M.

3+50
A-LINE
(STATE ROUTE 3 - E PINE ST)



ABBREVIATIONS
 BOW BACK OF WALK
 FL FLOW LINE
 TBC TOP BACK OF CURB
 FG FINISHED GRADE



File 14, 2019 3:23:13pm - User: nick.mayfield
 N:\PROJECTS\0238 MASON TRANSIT AUTHORITY\0238.05 MTA PARK AND RIDE DEVELOPMENT\CADD\YEAR 0\CRH\RD\0738.05-SD-4-RD.DWG

| REVISIONS | DATE | BY | DESIGNED BY: | ISSUE DATE: |
|----------------|------------|-----|--------------------------|-------------------------------------|
| △ BID ADDENDUM | 02-15-2019 | SCJ | P. HOLM | APRIL 2018 |
| | | | DRAWN BY:
N.MAYFIELD | JOB No.:
0738.05 |
| | | | CHECKED BY:
S. SAWYER | DRAWING FILE No.:
0738.5-SD-3-PO |

ALL DIMENSIONS SHOWN IN FEET UNLESS OTHERWISE DESIGNATED



SCJ ALLIANCE
 CONSULTING SERVICES
 8730 TALLON LANE NE, SUITE 200, LACEY, WASHINGTON 98516
 P: 360-352-1465 F: 360-352-1509
 SCJALLIANCE.COM

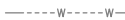



PROJECT NAME:

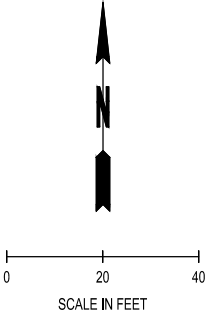
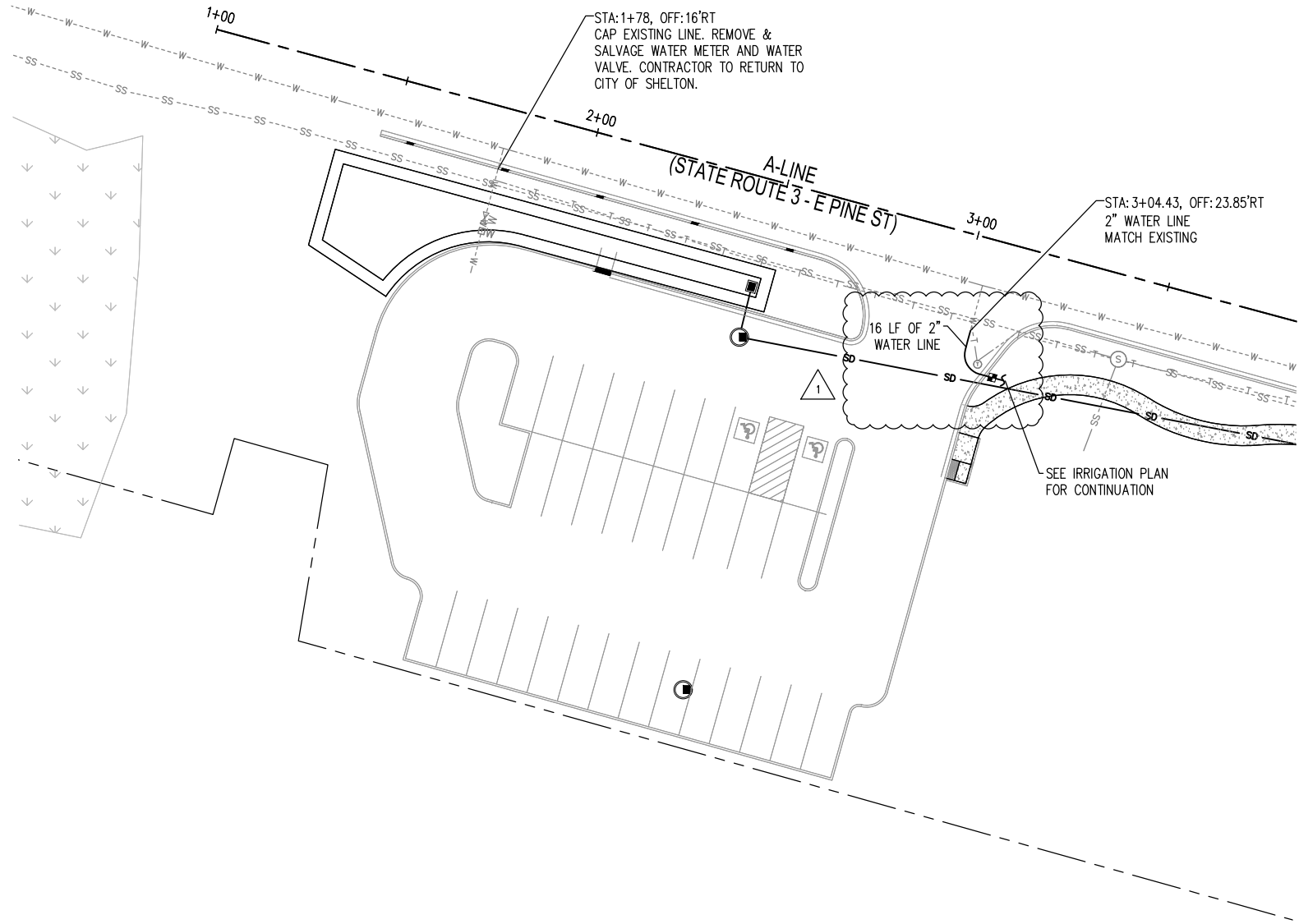
MASON TRANSIT AUTHORITY
 PEAR ORCHARD
 PARK AND RIDE DEVELOPMENT
RAMP GRADING DETAILS

DRAWING No.: SD-3
 SHEET No.: 10 OF 23

T. 20 N., R. 03 W., S 20, W.M.

LEGEND:

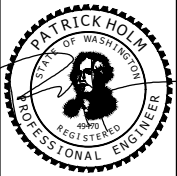
-  EXISTING WATER LINE
-  EXISTING FIRE HYDRANT
-  PROPOSED WATERLINE PER CITY OF SHELTON
DETAIL W-03
-  PROPOSED WATER METER PER CITY OF SHELTON
DETAIL W-03



File 14, 2019 3:23:34pm - User: nrmayfield
 N:\PROJECTS\0238 MASON TRANSIT AUTHORITY\0238.05 MTA PARK AND RIDE DEVELOPMENT\CADD\YEAR ORCHARD\0238.5-UT-1-PO.DWG

| REVISIONS | DATE | BY | DESIGNED BY: | ISSUE DATE: |
|----------------|------------|-----|--------------------------|-------------------------------------|
| △ BID ADDENDUM | 02-15-2019 | SCJ | P. HOLM | APRIL 2018 |
| | | | DRAWN BY:
N.MAYFIELD | JOB No.:
0738.05 |
| | | | CHECKED BY:
S. SAWYER | DRAWING FILE No.:
0738.5-UT-1-PO |

ALL DIMENSIONS SHOWN IN FEET UNLESS OTHERWISE DESIGNATED




SCJ ALLIANCE
 CONSULTING SERVICES
 8730 TALLON LANE NE, SUITE 200, LACEY, WASHINGTON 98516
 P: 360-352-1465 F: 360-352-1509
 SCJALLIANCE.COM

PROJECT NAME:



MASON TRANSIT AUTHORITY
 PEAR ORCHARD
 PARK AND RIDE DEVELOPMENT
 UTILITY PLAN

DRAWING No.:
UT-1

SHEET No.:
12 OF 23

T. 20 N., R. 03 W., S 20, W.M.

LEGEND

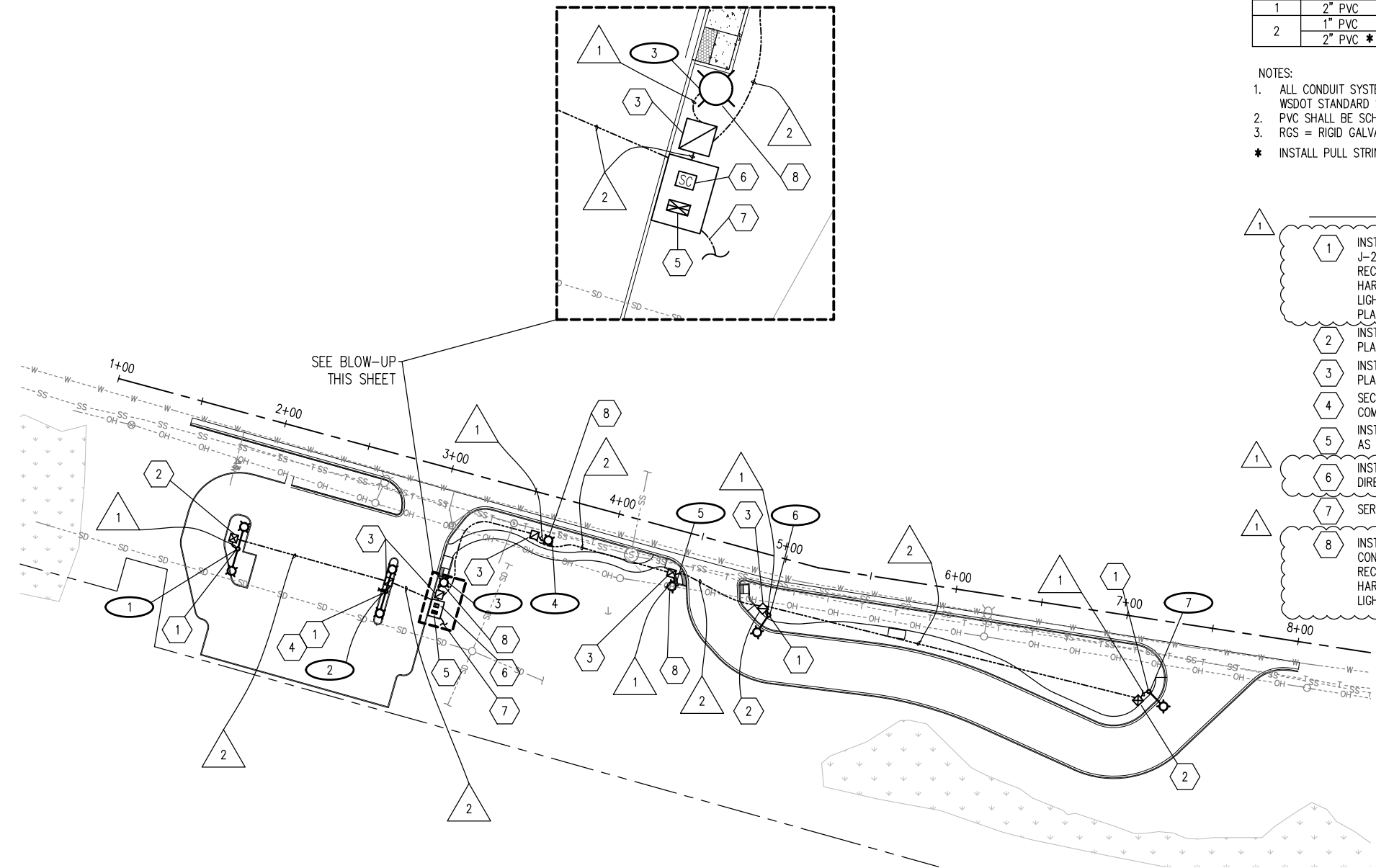
| EXISTING | NEW | |
|----------|-----|-----------------------------------|
| | | TYPE 1 JUNCTION BOX, J-40.10 |
| | | TYPE 2 JUNCTION BOX, J-40.10 |
| | | SECURITY CAMERA EQUIPMENT CABINET |
| | | ILLUMINATION SERVICE CABINET |
| | | SECURITY CAMERA |
| | | ILLUMINATION CONDUIT |
| | | SECURITY CAMERA CONDUIT |
| | | OVERHEAD POWER |
| | | UNDERGROUND POWER |
| | | UNDERGROUND TELEPHONE |
| | | WATER LINE |
| | | SANITARY SEWER LINE |
| | | POWER POLE |
| | | POLE TOP LIGHT STANDARD |
| | | SINGLE ARM LIGHT STANDARD |
| | | DOUBLE ARM LIGHT STANDARD |
| | | WIRE NOTE |
| | | CONSTRUCTION NOTE |
| | | LUMINAIRE NUMBER |

| RUN NO. | CONDUIT SIZE | WIRE/CABLE | | | | REMARKS |
|---------|--------------|------------|--------|--------------|----------------|------------------------|
| | | #2 AWG | #6 AWG | #8 AWG GRND. | #8 AWG COAX/5C | |
| 1 | 2" PVC | | | 1 | 2 | ILLUMINATION |
| 2 | 1" PVC | | | 1 | 2 | ILLUMINATION |
| | 2" PVC * | | | | | SECURITY CAMERA SYSTEM |

- NOTES:
- ALL CONDUIT SYSTEMS SHALL HAVE CONTINUOUS GREEN GROUND WIRE PER WSDOT STANDARD SPECIFICATIONS. SEE ALSO WSDOT STANDARD PLAN J-60.05.
 - PVC SHALL BE SCHEDULE 80.
 - RGS = RIGID GALVANIZED STEEL
 - INSTALL PULL STRING FOR FUTURE USE PER WSDOT STANDARD SPECIFICATION 8-20.3(5)A

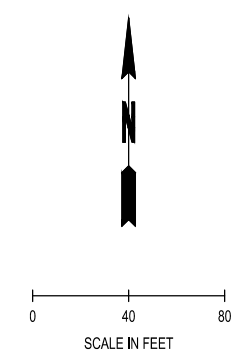
CONSTRUCTION NOTES

- INSTALL TYPE B FOUNDATION (METHOD 2) PER WSDOT STANDARD PLAN J-28.30. CONTRACTOR TO MODIFY BOLT PATTERN TO MEET MANUFACTURER RECOMMENDATIONS. INSTALL NEW LIGHT STANDARD AND ASSOCIATED HARDWARE PER APPLICABLE WSDOT J-SERIES STANDARD PLANS. SEE LIGHTING SCHEDULE THIS SHEET. LIGHT STANDARD PLACEMENT PER STD. PLAN J-28.26.
- INSTALL TYPE 1 JUNCTION BOX WITH LOCKING LID PER WSDOT STANDARD PLAN J-40.10.
- INSTALL TYPE 2 JUNCTION BOX WITH LOCKING LID PER WSDOT STANDARD PLAN J-40.10.
- SECURITY CAMERA AND CABLE TO BE INSTALLED BY HOOD CANAL COMMUNICATIONS.
- INSTALL SERVICE CABINET PER WSDOT STANDARD PLAN J-10.20 AS DIRECTED BY MASON COUNTY PUD 3.
- INSTALL CABINET PER WSDOT STANDARD PLAN J-10.20 AND J-12.15 AS DIRECTED BY HOOD CANAL COMMUNICATIONS.
- SERVICE CONNECTION TO BE INSTALLED BY MASON COUNTY PUD 3.
- INSTALL TYPE PS FOUNDATION PER WSDOT STANDARD PLAN J-21.10. CONTRACTOR TO MODIFY BOLT PATTERN TO MEET MANUFACTURER RECOMMENDATIONS. INSTALL NEW LIGHT STANDARD AND ASSOCIATED HARDWARE PER APPLICABLE WSDOT J-SERIES STANDARD PLANS. SEE LIGHTING SCHEDULE THIS SHEET.



| LUM NO. | SERVICE NO. | CIRCUIT NO. | TYPE-DISTRIBUTION-WATTAGE | MTG. HT. (H1) | POLE HT. (H2) | MAST ARM LENGTH(FT) | MAST ARM TYPE | BASE STYLE | LOCATION | FOUNDATION TYPE |
|---------|-------------|-------------|---------------------------|---------------|---------------|---------------------|---------------|------------|------------------|-----------------|
| 1 | 1 | A | LED-V-72* | 25 | 22.5 | 12 | DOUBLE - 1 | FIXED | 1+75.3, 69.2 RT | CASE L |
| 2 | 1 | A | LED-V-72* | 25 | 22.5 | 12 | DOUBLE - 1 | FIXED | 2+71.1, 80.3 RT | CASE L |
| 3 | 1 | A | LED-MC III-80* | 12 | 12 | --- | PEDESTRIAN | FIXED | 3+09.0, 55.9 RT | TYPE PS |
| 4 | 1 | A | LED-MC III-80* | 12 | 12 | --- | PEDESTRIAN | SLIP | 3+64.4, 23.4 RT | TYPE PS |
| 5 | 1 | A | LED-MC III-80* | 12 | 12 | --- | PEDESTRIAN | SLIP | 4+486.0, 29.9 RT | TYPE PS |
| 6 | 1 | A | LED-MC III-72* | 25 | 25 | 12 | SINGLE - 1 | SLIP | 5+00.5, 34.9 RT | CASE K |
| 7 | 1 | A | LED-MC III-72* | 25 | 25 | 12 | SINGLE - 1 | SLIP | 7+19.0, 41.7 RT | CASE K |

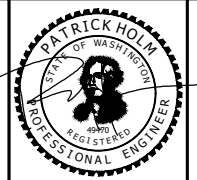
*SEE SPECIAL PROVISIONS



File 15_2019_8_30_38em - User: nick.mayfield
N:\PROJECTS\0238 MASON TRANSIT AUTHORITY\0238.05 MTA PARK AND RIDE DEVELOPMENT\0238.05 YEAR ORCHARD\0738.5-L-1-POD.MXD

| REVISIONS | DATE | BY | DESIGNED BY: | ISSUE DATE: |
|--------------|------------|-----|--------------|---------------------------------|
| BID ADDENDUM | 02-15-2019 | SCJ | P. HOLM | APRIL 2018 |
| | | | N.MAYFIELD | JOB No.: 0738.05 |
| | | | S. SAWYER | DRAWING FILE No.: 0738.5-L-1-PO |

ALL DIMENSIONS SHOWN IN FEET UNLESS OTHERWISE DESIGNATED

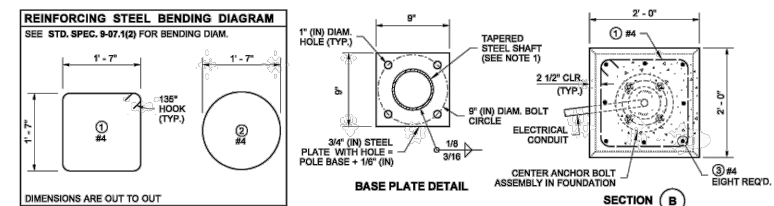


SCJ ALLIANCE
CONSULTING SERVICES
8730 TALLON LANE NE, SUITE 200, LACEY, WASHINGTON 98516
P: 360-352-1465 F: 360-352-1509
SCJALLIANCE.COM

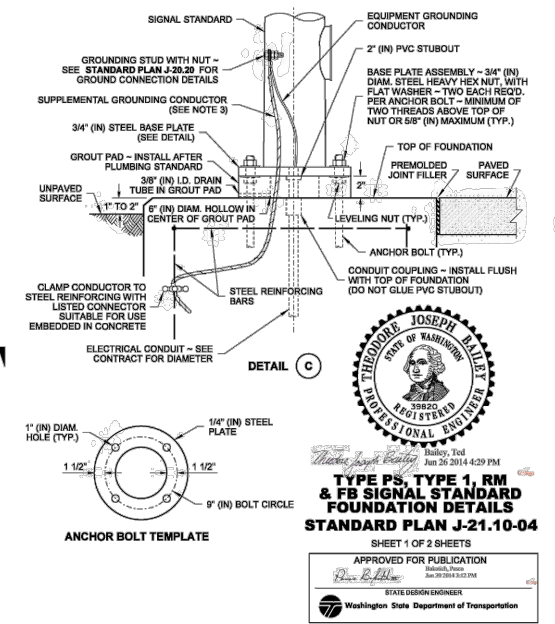
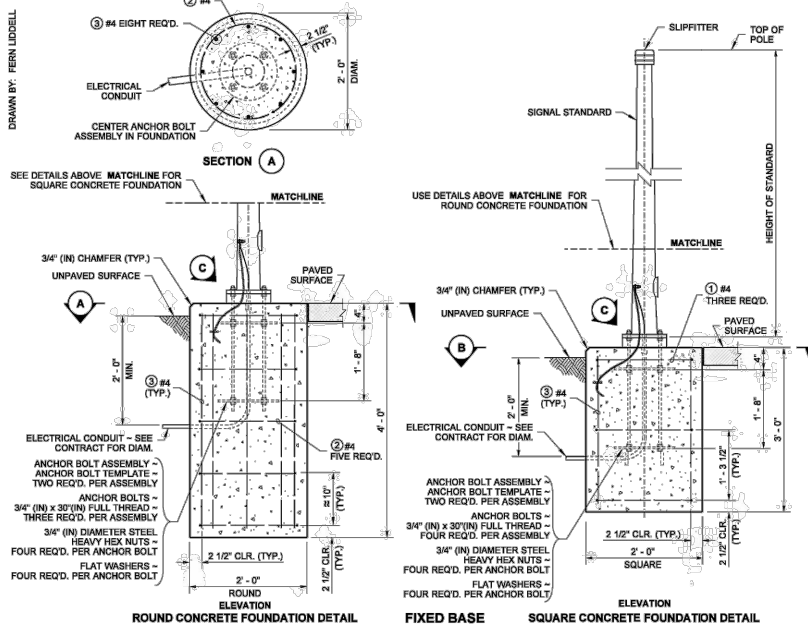
PROJECT NAME:

MASON TRANSIT AUTHORITY
PEAR ORCHARD
PARK AND RIDE DEVELOPMENT
LIGHTING AND SECURITY PLAN

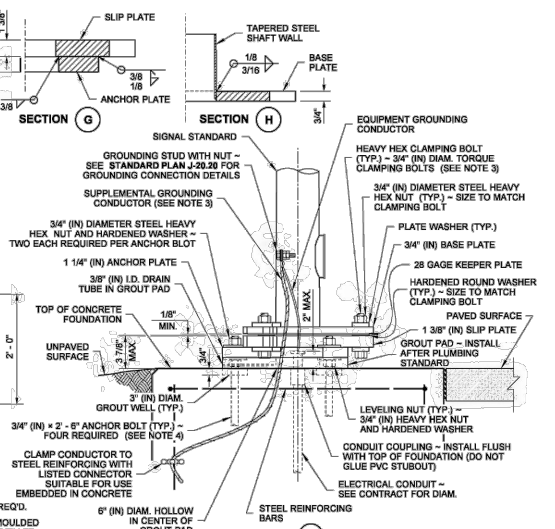
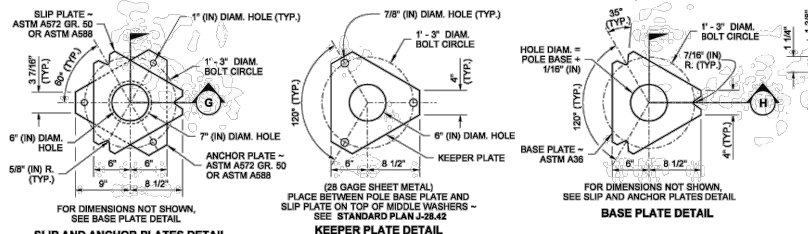
DRAWING No.: IL-1
SHEET No.: 14 OF 23



- NOTES**
- Clamping bolts shall be tightened to 50 ft-lbs max. torque. After state inspection, burr threads to prevent nut rotation. DO NOT OVERTIGHTEN.
 - The final height of the Anchor Bolts shall be below the top of the slip plate assembly to ensure proper function of the slip base.
 - Supplemental grounding conductor shall be non-insulated #4 AWG stranded copper and shall be clamped to vertical rebar with a connector suitable for use embedded in concrete. Provide 3" - 0" min. slack. Attach to pole grounding stud with a full circle crimp-on connector (crimped with a manufacturer recommended crimper).
 - Junction box serving the Standard shall preferably be located 5' - 0" (10' - 0" Max.) from the Standard.
 - Provide cable tie at wiring entering the junction box (for slip base installations only) - See Detail A, Standard Plan J-28.70.
 - Keeper Plate shall not extend beyond the edges of the pole base plate.



JOSEPH HALEY
REGISTERED PROFESSIONAL ENGINEER
No. 39823
Jun 26 2014 4:29 PM
TYPE PS, TYPE 1, RM & FB SIGNAL STANDARD FOUNDATION DETAILS
STANDARD PLAN J-21.10-04
SHEET 1 OF 2 SHEETS
APPROVED FOR PUBLICATION
Washington State Department of Transportation

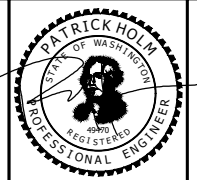


JOSEPH HALEY
REGISTERED PROFESSIONAL ENGINEER
No. 39823
Jun 26 2014 4:29 PM
TYPE PS, TYPE 1, RM & FB SIGNAL STANDARD FOUNDATION DETAILS
STANDARD PLAN J-21.10-04
SHEET 2 OF 2 SHEETS
APPROVED FOR PUBLICATION
Washington State Department of Transportation

Feb 14, 2019 3:24:18pm - User: nick.mayfield
N:\PROJECTS\0238 MASON TRANSIT AUTHORITY\0238.05 MTA PARK AND RIDE DEVELOPMENT\CADD\YEAR ORCHARD\0738-1-3-PONDING

| REVISIONS | DATE | BY | DESIGNED BY: | ISSUE DATE: |
|--------------|------------|-----|--------------|---------------------------------|
| BID ADDENDUM | 02-15-2019 | SCJ | P.HOLM | APRIL 2018 |
| | | | N.MAYFIELD | JOB No.: 0738.05 |
| | | | S.SAWYER | DRAWING FILE No.: 0738.5-L-3-PO |

ALL DIMENSIONS SHOWN IN FEET UNLESS OTHERWISE DESIGNATED

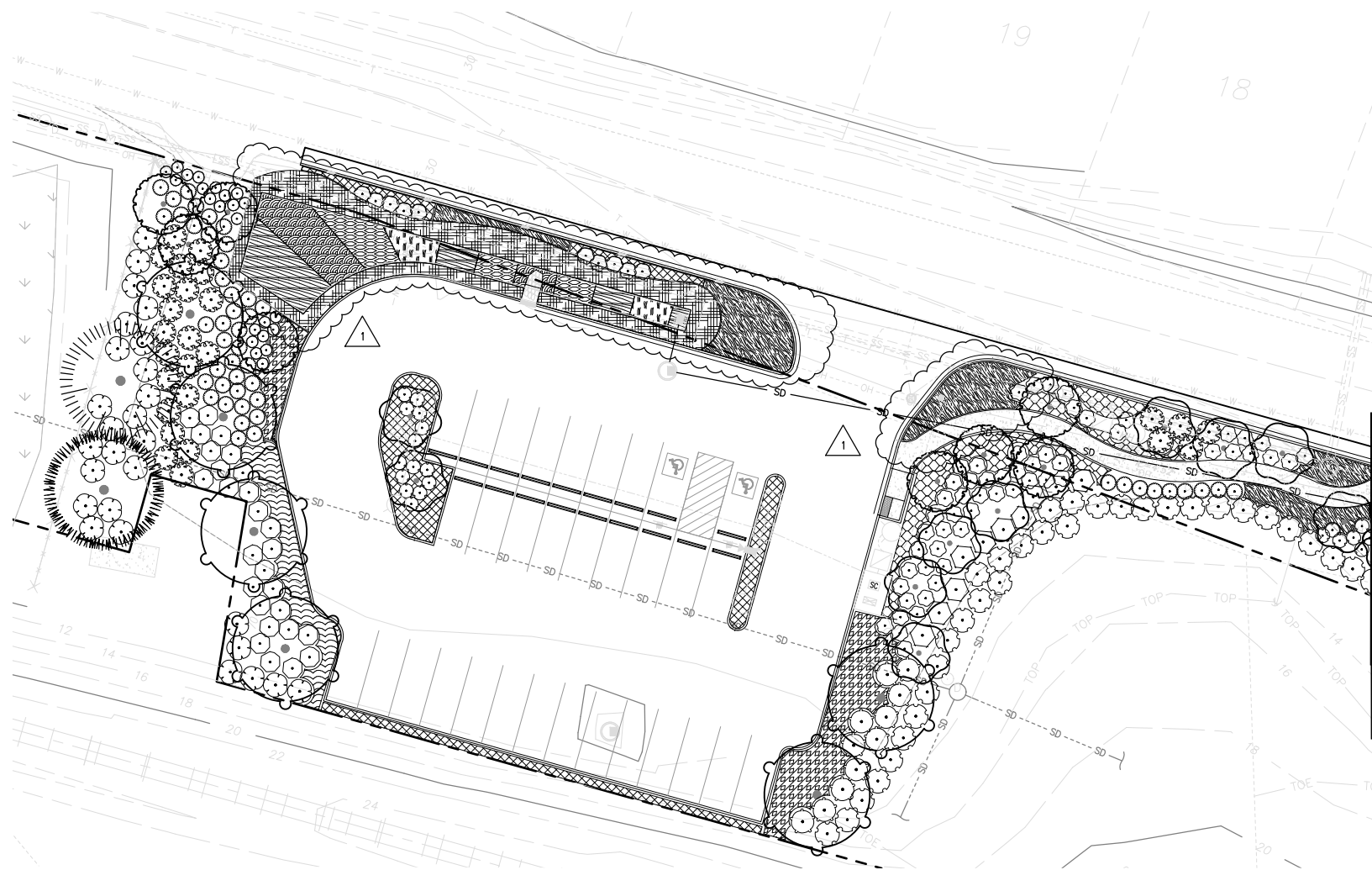


SCJ ALLIANCE
CONSULTING SERVICES
8730 TALLON LANE NE, SUITE 200, LACEY, WASHINGTON 98516
P: 360-352-1465 F: 360-352-1509
SCJALLIANCE.COM

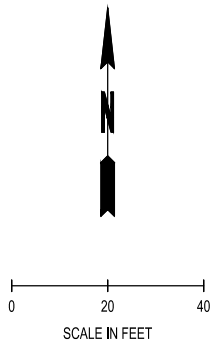


MASON TRANSIT AUTHORITY
PEAR ORCHARD
PARK AND RIDE DEVELOPMENT
LIGHTING AND SECURITY DETAILS
DRAWING No.: IL-3
SHEET No.: 16 OF 23

T. 20 N., R. 03 W., S 20, W.M.



MATCHLINE
SEE SHEET LS-2



File 14, 2019 3:24:40pm - User: nicksmyfield
 N:\PROJECTS\0238 MASON TRANSIT AUTHORITY\0238.05 MTA PARK AND RIDE DEVELOPMENT\CADD\YEAR ORCHARD\0238.5-LS-1-3-POND.DWG

| REVISIONS | DATE | BY | DESIGNED BY: | ISSUE DATE: |
|----------------|------------|-----|--------------|-------------------|
| △ BID ADDENDUM | 02-15-2019 | SCJ | P. HOLM | APRIL 2018 |
| | | | DRAWN BY: | JOB No.: |
| | | | K. JANKOVSKY | 0738.05 |
| | | | CHECKED BY: | DRAWING FILE No.: |
| | | | S. SAWYER | 0738.5-LS-1-3-PO |

ALL DIMENSIONS SHOWN IN FEET UNLESS OTHERWISE DESIGNATED




SCJ ALLIANCE
 CONSULTING SERVICES
 8730 TALLON LANE NE, SUITE 200, LACEY, WASHINGTON 98516
 P: 360-352-1465 F: 360-352-1509
 SCJALLIANCE.COM

PROJECT NAME:

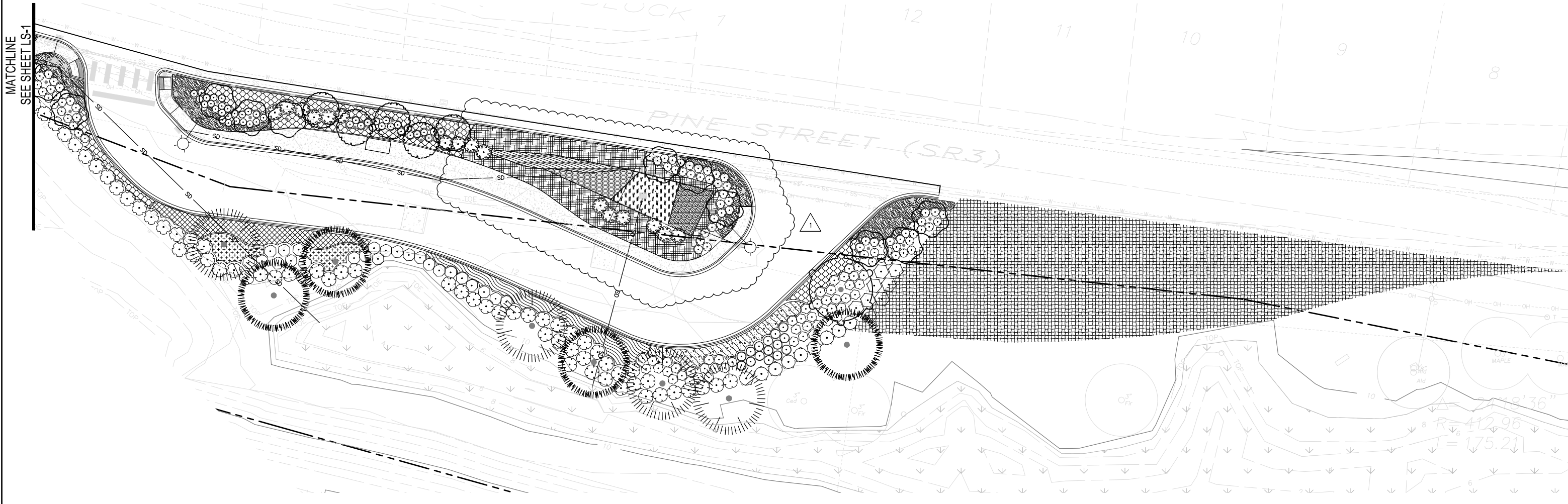


MASON TRANSIT AUTHORITY
 PEAR ORCHARD
 PARK AND RIDE DEVELOPMENT
 LANDSCAPE PLAN

DRAWING No.: LS-1

SHEET No.: 17 OF 23

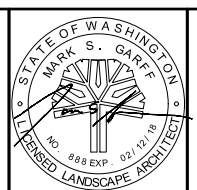
T. 20 N., R. 03 W., S 20, W.M.



File 14, 2019 3:24:50pm - User: nrickmayfield
 N:\PROJECTS\0238 MASON TRANSIT AUTHORITY\0238.05 MTA PARK AND RIDE DEVELOPMENT\CADD\YEAR ORCHARD\0738.5-LS-1-3-PO.DWG

| REVISIONS | DATE | BY | DESIGNED BY: | ISSUE DATE: |
|----------------|------------|-----|--------------|-------------------|
| △ BID ADDENDUM | 02-15-2019 | SCJ | P. HOLM | APRIL 2018 |
| | | | DRAWN BY: | JOB No.: |
| | | | K. JANKOVSKY | 0738.05 |
| | | | CHECKED BY: | DRAWING FILE No.: |
| | | | S. SAWYER | 0738.5-LS-1-3-PO |

ALL DIMENSIONS SHOWN IN FEET UNLESS OTHERWISE DESIGNATED




SCJ ALLIANCE
 CONSULTING SERVICES
 8730 TALLON LANE NE, SUITE 200, LACEY, WASHINGTON 98516
 P: 360-352-1465 F: 360-352-1509
 SCJALLIANCE.COM

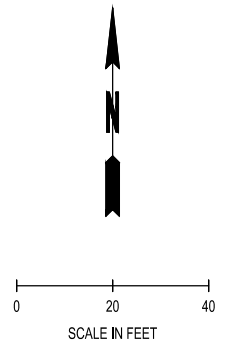
PROJECT NAME:



MASON TRANSIT AUTHORITY
 PEAR ORCHARD
 PARK AND RIDE DEVELOPMENT
 LANDSCAPE PLAN

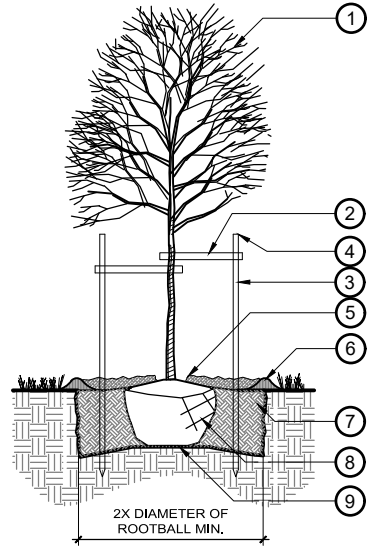
DRAWING No.: LS-2

SHEET No.: 18 OF 23



GENERAL LANDSCAPE NOTES:

1. THE LANDSCAPE ARCHITECTURAL PLANS ARE TO BE USED IN CONJUNCTION WITH THE CIVIL, IRRIGATION, MECHANICAL, ELECTRICAL, AND ARCHITECTURAL SITE PLANS TO FORM COMPLETE INFORMATION REGARDING THE SITE.
2. THE INFORMATION ON THIS SHEET IS INCOMPLETE UNLESS ACCOMPANIED BY THE CORRESPONDING SPECIFICATION SECTION(S) DEVELOPED FOR THIS PROJECT. REFER TO SPECIFICATIONS FOR ADDITIONAL INFORMATION.
3. LANDSCAPE CONSTRUCTION SHALL CONFORM TO ALL APPLICABLE STATE AND LOCAL CODES AND SPECIFICATIONS.
4. ALL MATERIAL AND WORKMANSHIP SHALL BE MAINTAINED AND GUARANTEED FOR A PERIOD OF 12 MONTHS FOLLOWING THE SUBSTANTIAL COMPLETION DATE.
5. LANDSCAPE CONTRACTOR SHALL EXAMINE THE SITE CONDITIONS UNDER WHICH THE WORK IS TO BE PERFORMED, NOTIFY THE GENERAL CONTRACTOR IN WRITING OF UNSATISFACTORY CONDITIONS. DO NOT PROCEED UNTIL CONDITIONS HAVE BEEN CORRECTED.
6. BEFORE COMMENCING WORK, LANDSCAPE CONTRACTOR SHALL CONTACT APPROPRIATE UTILITY COMPANIES FOR UTILITY LOCATIONS, AND COORDINATE WITH GENERAL CONTRACTOR IN REGARD TO LOCATION OF PROPOSED UTILITIES, IRRIGATION SLEEVES, CONDUITS, ETC.
7. VERIFY THAT SUBGRADE PREPARATION HAS BEEN COMPLETED TO ACCEPTABLE TOLERANCES PRIOR TO BEGINNING ANY WORK.
8. ALL TREE AND SHRUB LOCATIONS ARE TO BE STAKED ON SITE FOR APPROVAL BY OWNER'S REPRESENTATIVE PRIOR TO INSTALLATION.
9. ROOT BARRIER SHALL BE INSTALLED ON ALL TREES WITHIN 6' OF A CURB OR SIDEWALK.
10. PLANTING AREAS SHALL BE MULCHED WITH 3 INCHES OF APPROVED DARK FINE MULCH. FINISH GRADE OF MULCH SHALL NOT BE ABOVE OR MORE THAN 1/2 INCH BELOW ADJOINING SURFACE.
11. ALL B&B PLANT MATERIAL SHALL HAVE ALL WIRE, TWINE, OR OTHER CONTAINMENT MATERIAL, EXCEPT FOR 100% HEMP BURLAP, REMOVED FROM THE TRUNK AND ROOT BALL OF THE PLANT PRIOR TO PLANTING. REMOVE THE TOP 2/3 OF THE HEMP BURLAP AFTER PLACING PLANT IN THE PIT.
12. PLANTING SOIL FOR ALL PLANTING AREAS:
 - a. SPREADING OF PLANTING SOIL SHALL BE COMPLETED BY THE LANDSCAPE CONTRACTOR AND SUPERVISED BY THE GENERAL CONTRACTOR SO THAT GRADES ARE MET AS NOTED ON THE GRADING PLANS. PLANTING SOIL DEPTH SHALL BE A MINIMUM OF SIX (6) INCHES IN ALL LANDSCAPE BEDS.
 - b. ALL PLANTING SOIL SHALL BE EXISTING SITE SOIL AMENDED PER THE SOIL LABORATORY'S RECOMMENDATIONS OR USE IMPORTED TOPSOIL PER SPECIFICATIONS IF EXISTING SITE SOIL CANNOT BE AMENDED.
 - c. APPLY 2 INCHES OF APPROVED PLANTING SOIL OVER PREPARED SUBGRADE AND TILL INTO TOP 2-4 INCHES OF SUBSOIL. INSTALL REMAINING PLANTING SOIL TO A MINIMUM OF 4 INCHES SO THE TOTAL MINIMUM DEPTH OF NEW PLANTING SOIL IN NO LESS THAN 6 INCHES. ROLL AND RAKE SMOOTH. ENSURE NO ROCKS OR OTHER DEBRIS EXCEEDING 3 INCHES IN DIAMETER REMAIN.
 - d. TOPSOIL SHALL BE PLACED IN ALL PARKING AREA PLANTER ISLANDS TO A DEPTH OF THREE (3) FEET. THE TOP SIX (6) INCHES OF TOPSOIL SHALL BE AMENDED WITH THE ADDITION OF TWO (2) INCHES COMPOST.
13. MULCH ENTIRE LANDSCAPE AREA TO A DEPTH OF 3 INCHES WITH DARK FINE MULCH.
14. ALL LANDSCAPING SHALL BE PLANTED AND MAINTAINED IN A LIVING CONDITION BY THE CONTRACTOR UNTIL FINAL OWNER ACCEPTANCE.
15. ALL LANDSCAPE AREAS TO BE WATERED BY AUTOMATIC IRRIGATION SYSTEM. TO BE DESIGNED
16. PLANT SYMBOLS SHALL DICTATE COUNT.
17. REFER TO PROJECT SPECIFICATIONS FOR MORE DETAILED INSTRUCTIONS.

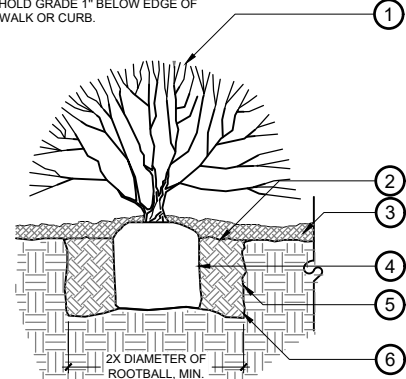


1 TREE PLANTING DETAIL

NTS PG-MT-01

NOTE:

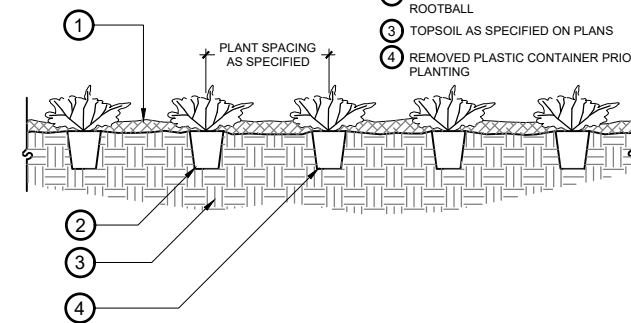
1. ANY BROKEN OR CRUMBLING ROOTBALL WILL BE REJECTED.
2. HOLD GRADE 1" BELOW EDGE OF WALK OR CURB.



2 SHRUB PLANTING DETAIL

NTS PG-MT-06

1. APPLY 3" DEPTH MULCH AS SPECIFIED ON PLANS. NOTE: MULCH DEPTH AROUND PLANT BASE MAY BE THINNER. DO NOT BURY PLANT WITH MULCH.
2. PLANTING PIT TO BE 2X DIAMETER OF ROOTBALL
3. TOPSOIL AS SPECIFIED ON PLANS
4. REMOVED PLASTIC CONTAINER PRIOR TO PLANTING



3 GROUND COVER PLANTING DETAIL

NTS PG-MT-03

PLANT SCHEDULE

| TREES | QTY | BOTANICAL / COMMON NAME | CAL | GROUND COVERS | QTY | BOTANICAL / COMMON NAME | CONT | SPACING |
|-------|-----|--|-----------|---------------|----------|---|-----------|----------|
| | 21 | AMELANCHIER X GRANDIFLORA 'COLE'S SELECT' SERVICEBERRY | 2" CAL | | 313 | ARCTOSTAPHYLOS UVA-URSI KINKINNICK | 4"POT | 18" o.c. |
| | 7 | CERCIDIPHYLLUM JAPONICUM KATSURA TREE | 2.5" CAL. | | 448 | CALLUNA VULGARIS 'FIREFLY' HEATHER | 1 GAL | 24" o.c. |
| | 13 | CERCIS CANADENSIS EASTERN REDBUD | 2" CAL | | 121 | GAULTHERIA SHALLON SALAL | 1 GAL | 30" o.c. |
| | 5 | PSEUDOTSUGA MENZIESII DOUGLAS FIR | 15 GAL | | 310 | GERANIUM X CANTABRIGIENSE 'BIOKOVO' BOKOVO CRANESBILL | 1 GAL | 30" o.c. |
| | 5 | THUJA PLICATA WESTERN RED CEDAR | 15 GAL | | 9,435 SF | HYDROSEED & TOPSOIL MIX SEE NOTES BELOW | HYDROSEED | |
| | 51 | ARCTOSTAPHYLOS COLUMBIANA HAIRY MANZANITA | 5 GAL | | 95 | VACCINIUM OVATUM EVERGREEN HUCKLEBERRY | 1 GAL | 24" o.c. |
| | 18 | CEANOTHUS X 'PUGET BLUE' CALIFORNIA LILAC | 5 GAL | | 164 | CAREX TESTACEA CAREX | 2 GAL | 24" o.c. |
| | 66 | CHOISYA TERNATA 'SUNDANCE' GOLDEN MEXICAN MOCK ORANGE | 5 GAL | | 58 | CORNUS SERICEA 'FLAVIRAMEA' YELLOW TWIG DOGWOOD | 2 GAL | 36" o.c. |
| | 42 | CORNUS SERICEA 'BAILEY' RED TWIG DOGWOOD | 2 GAL | | 258 | JUNCUS PATENS 'ELK BLUE' SPREADING RUSH | 4"POT | 18" o.c. |
| | 20 | DRIMYS LANCEOLATA PEPPER TREE | 5 GAL | | 1,341 | MAHONIA REPENS CREEPING MAHONIA | 1 GAL | 18" o.c. |
| | 68 | HOLIDISCUS DISCOLOR OCEAN-SPRAY | 5 GAL | | 225 | SCIRPUS MICROCARPUS SMALL-FRUITED BULRUSH | 4"POT | 18" o.c. |
| | 100 | HYDRANGEA QUERCIFOLIA 'PEE WEE' OAKLEAF HYDRANGEA | 5 GAL | | | | | |
| | 64 | OSMANTHUS DELAVAYI DELAVAYI OSMANTHUS | 5 GAL | | | | | |

TOPSOIL NOTES FOR HYDROSEED AREAS ONLY:

- TOPSOIL TO BE 60% SAND AND 40% COMPOST.
- LEVEL EXCAVATED AREAS AS REQUIRED.
- MINIMUM DEPTH TO BE 2"

HYDROSEED TOPSOIL NOTES:

HYDROSEED MIX TO CONSIST OF THE FOLLOWING.

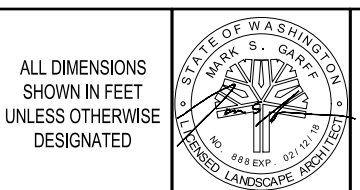
- 45% CREEPING RED FESCUE
- 45% PERENNIAL RYEGRASS
- 10% HIGHLAND COLONIAL BENTGRASS

AVAILABLE FROM DIRECT SEED SALES, (425) 466-1350
WWW.DIRECTSEEDSALES.COM

File 15_2019_8:59:05am - User: nrick.mayfield
K:\PROJECTS\0238 MASON TRANSIT AUTHORITY\0238.05 MTA PARK AND RIDE DEVELOPMENT\CADD\YEAR ORCHARD\0238-LS-1-3-PODING

| REVISIONS | DATE | BY | DESIGNED BY: | ISSUE DATE: |
|--------------|------------|-----|--------------|------------------------------------|
| BID ADDENDUM | 02-15-2019 | SCJ | P. HOLM | APRIL 2018 |
| | | | K. JANKOVSKY | JOB No.: 0738.05 |
| | | | S. SAWYER | DRAWING FILE No.: 0738.5-LS-1-3-PO |

ALL DIMENSIONS SHOWN IN FEET UNLESS OTHERWISE DESIGNATED



SCJ ALLIANCE
CONSULTING SERVICES
8730 TALLON LANE NE, SUITE 200, LACEY, WASHINGTON 98516
P: 360-352-1465 F: 360-352-1509
SCJALLIANCE.COM

PROJECT NAME:

MASON TRANSIT AUTHORITY
PEAR ORCHARD
PARK AND RIDE DEVELOPMENT

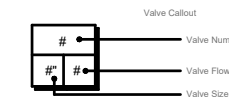
DRAWING No.: LS-3
SHEET No.: 19 OF 23

PLANTING SCHEDULE, NOTES, & DETAILS

IRRIGATION SCHEDULE - SHEET LS-4

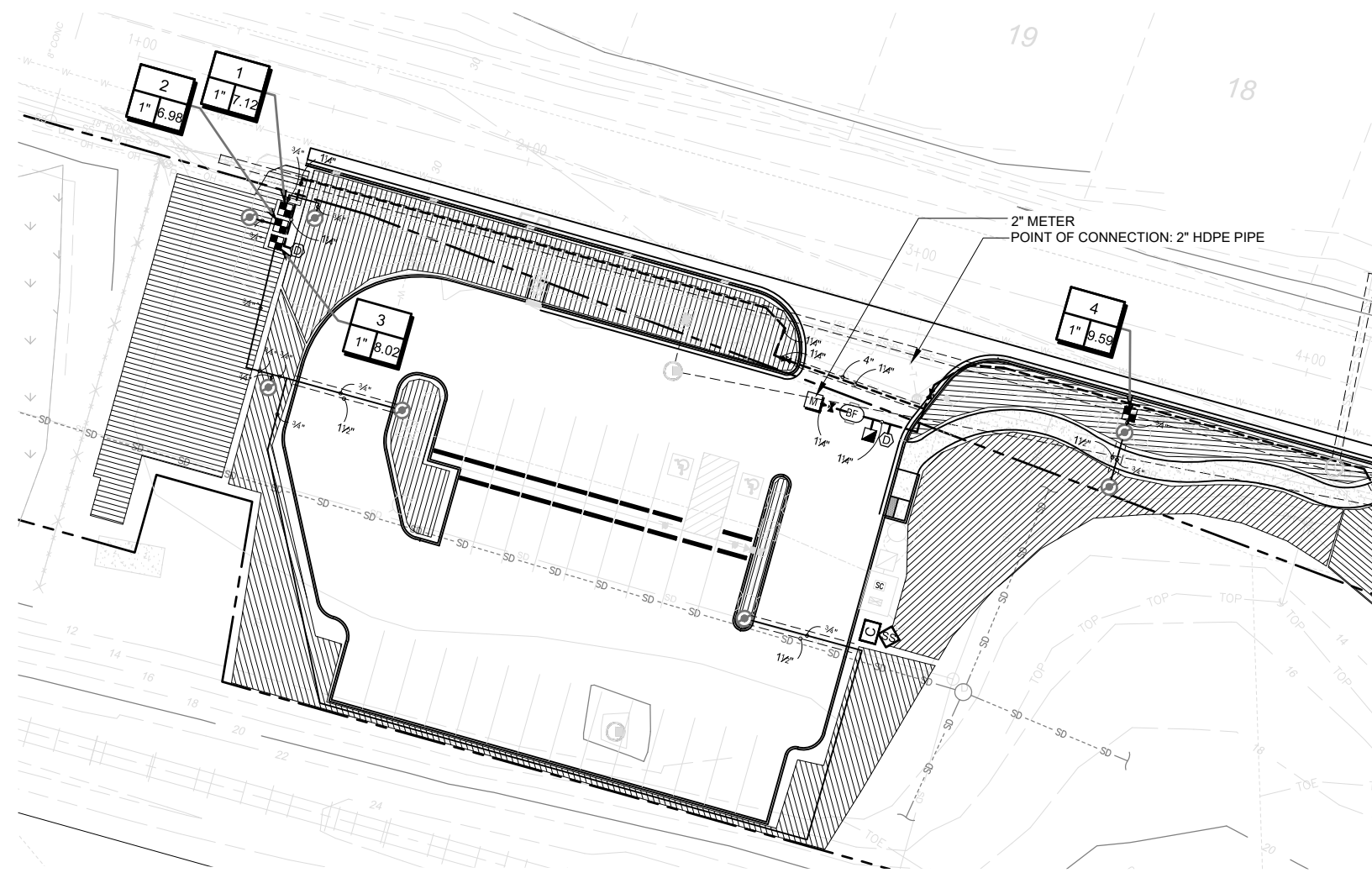
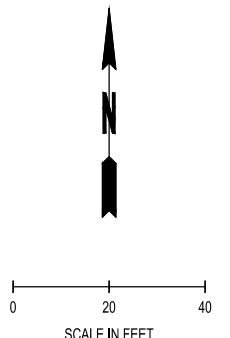
| SYMBOL | MANUFACTURER/MODEL/DESCRIPTION | QTY | DETAIL |
|--------|--|------------|---------|
| ■ | HUNTER ICZ-101-40
DRIP CONTROL ZONE KIT. 1" ICV GLOBE VALVE WITH 1" HY100 FILTER SYSTEM. PRESSURE REGULATION: 40PSI. FLOW RANGE: 2 GPM TO 20 GPM. 150 MESH STAINLESS STEEL SCREEN. | 4 | 7/LS-6 |
| ⊕ | TECHLINE START CONNECTION LATERAL TO DRIP ZONE TUBING WITH SWING JOINT ASSEMBLY | 7 | 8/LS-6 |
| ▨ | AREA TO RECEIVE DRIPLINE
NETAFIM TLDL-04-18
TECHLINE PRESSURE COMPENSATING LANDSCAPE DRIPLINE. 0.4 GPH EMITTERS AT 18" O.C. DRIPLINE LATERALS SPACED AT 18" APART, WITH EMITTERS OFFSET FOR TRIANGULAR PATTERN. SURFACE AND SUB SURFACE INSTALLATIONS. UV RESISTANT. | 8,079 L.F. | 10/LS-6 |

| SYMBOL | MANUFACTURER/MODEL/DESCRIPTION | QTY | DETAIL |
|--------|--|-----|--------|
| ■ | RAIN BIRD 3-RC
3/4" BRASS QUICK-COUPLING VALVE, WITH CORROSION-RESISTANT STAINLESS STEEL SPRING, THERMOPLASTIC RUBBER COVER, AND 1-PIECE BODY. | 1 | 9/LS-6 |
| ⊗ | MATCO-NORCA 759
BRASS SHUT OFF BALL VALVE, 1/2" TO 4". TWO PIECE BODY, BLOW-OUT PROOF STEM, CHROME PLATED SOLID BRASS BALL, THREADED, WITH PTFE SEATS. SAME SIZE AS MAINLINE PIPE. | 3 | 6/LS-6 |
| ⊕ | DRAIN VALVE | 2 | 3/LS-6 |
| ⊕ | FEBCO 850 1"
DOUBLE CHECK BACKFLOW PREVENTION, 1/2" TO 2" | 1 | / |
| ⊕ | HUNTER IC-1200-PP
MODULAR CONTROLLER, 12 STATIONS, OUTDOOR MODEL, PLASTIC PEDESTAL. COMMERCIAL USE. WITH ONE ICM-600 MODULE INCLUDED. | 1 | 4/LS-6 |
| ⊕ | HUNTER SOLAR-SYNC
SOLAR, RAIN FREEZE SENSOR WITH OUTDOOR INTERFACE, CONNECTS TO HUNTER PCC, PRO-C, AND I-CORE CONTROLLERS, INSTALL AS NOTED. INCLUDES 10 YEAR LITHIUM BATTERY AND RUBBER MODULE COVER, AND GUTTER MOUNT BRACKET. WIRED. | 1 | 2/LS-6 |
| M | WATER METER 2" | 1 | |
| — | IRRIGATION LATERAL LINE: PVC CLASS 200 SDR 21 404.2 L.F. | | |
| --- | IRRIGATION MAINLINE: PVC SCHEDULE 40 372.5 L.F. | | |
| ---- | PIPE SLEEVE: PVC CLASS 200 SDR 21 89.8 L.F. INSTALL AT 24" DEPTH | | |



VALVE SCHEDULE - ALL SHEETS

| NUMBER | MODEL | SIZE | TYPE | GPM |
|--------|-------------------|------|-------------------|-------|
| 1 | HUNTER ICZ-101-40 | 1" | AREA FOR DRIPLINE | 7.12 |
| 2 | HUNTER ICZ-101-40 | 1" | AREA FOR DRIPLINE | 6.98 |
| 3 | HUNTER ICZ-101-40 | 1" | AREA FOR DRIPLINE | 8.02 |
| 4 | HUNTER ICZ-101-40 | 1" | AREA FOR DRIPLINE | 9.59 |
| 5 | HUNTER ICZ-101-40 | 1" | AREA FOR DRIPLINE | 4.37 |
| 6 | HUNTER ICZ-101-40 | 1" | AREA FOR DRIPLINE | 4.31 |
| 7 | HUNTER ICZ-101-40 | 1" | AREA FOR DRIPLINE | 10.42 |
| 8 | HUNTER ICZ-101-40 | 1" | AREA FOR DRIPLINE | 7.68 |
| 9 | HUNTER ICZ-101-40 | 1" | AREA FOR DRIPLINE | 9.00 |
| 10 | HUNTER ICZ-101-40 | 1" | AREA FOR DRIPLINE | 7.85 |
| 11 | HUNTER ICZ-101-40 | 1" | AREA FOR DRIPLINE | 7.28 |
| 12 | HUNTER ICZ-101-40 | 1" | AREA FOR DRIPLINE | 5.60 |
| 13 | HUNTER ICZ-101-40 | 1" | AREA FOR DRIPLINE | 8.78 |



IRRIGATION SHEET NOTES

- SEE DETAILS AND SPECIFICATIONS FOR ADDITIONAL INFORMATION.
- PLAN IS DIAGRAMMATIC. ALL PIPING, LATERALS, AND WIRE TO BE LOCATED IN BED OR LAWN AREAS WHERE APPROPRIATE.
- PIPE SIZES ARE TO REMAIN CONSTANT BETWEEN PIPE SIZE CALL-OUTS. PIPES ARE LABELED TO SMALLEST PIPE SIZE ONLY (3/4").
- ALL DRIP TUBING SHALL BE INSTALLED BELOW THE FINISH SOIL GRADE UNLESS NOTED OTHERWISE. INSTALL TUBING AT A CONSISTENT DEPTH OF 2" BELOW TOP OF TOPSOIL.
- ALL PIPES AND SLEEVES UNDER PAVED AREAS SHALL BE 24" DEEP. ALL MAINLINE SHALL BE 18" DEEP IN ALL UNPAVED AREAS, 24" IN PAVED AREAS. ALL LATERALS SHALL BE 12" DEEP IN ALL UNPAVED AREAS AND 24" DEEP IN PAVED AREAS.
- LOCATE ALL MAINLINES WITHIN THE PROJECT LIMITS. INSTALL #14-AWG DIRECT BURIAL LOW VOLTAGE WIRE ALONG MAINLINE; TAPE AND BUNDLE WIRE EVER 20' FT. PROVIDE RED COLOR WIRE FOR SIGNAL AND WHITE COLOR WIRE FOR COMMON. PROVIDE A MINIMUM OF ONE SPARE WIRE FOR EVERY 10 VALVES FOR A MAXIMUM OF FIVE SPARE WIRES.
- ALL WORK SHALL BE PERFORMED TO THE SATISFACTION OF THE LANDSCAPE ARCHITECT/OWNER.

File 14, 2019, 3:25:19pm - User: nick.moyfield
 K:\PROJECTS\0238 MASON TRANSIT AUTHORITY\0238.05 MTA PARK AND RIDE DEVELOPMENT\CADD\YEAR ORCHARD\0238-LS-4-6-PWDING

| REVISIONS | DATE | BY | DESIGNED BY: | ISSUE DATE: |
|-----------|------------|-----|--------------|-------------|
| △ | | | P. HOLM | APRIL 2018 |
| △ | 02-15-2019 | SCJ | | |

| | |
|--------------|-------------------|
| DRAWN BY: | JOB No.: |
| K. JANKOVSKY | 0738.05 |
| CHECKED BY: | DRAWING FILE No.: |
| S. SAWYER | 0738.5-LS-4-6-PO |

ALL DIMENSIONS SHOWN IN FEET UNLESS OTHERWISE DESIGNATED

SCJ ALLIANCE
CONSULTING SERVICES
8730 TALLON LANE NE, SUITE 200, LACEY, WASHINGTON 98516
P: 360-352-1465 F: 360-352-1509
SCJALLIANCE.COM

PROJECT NAME:

MASON TRANSIT AUTHORITY
PEAR ORCHARD
PARK AND RIDE DEVELOPMENT

IRRIGATION PLAN

DRAWING No.:
LS-4

SHEET No.:
20 OF 23

Mason Transit Authority
Invitation to Bid
Pear Orchard Park and Ride

Mason Transit Authority (MTA), located in Shelton, Washington, requests Project Proposal SEALED BIDS for construction of the:

**MASON TRANSIT AUTHORITY
PEAR ORCHARD PARK AND RIDE**

The improvement(s) for which Project Proposals will be received is described below:

Improvement to the Mason Transit Authority Pear Orchard Park and Ride Facility, which will include new pavement, pavement reconstruction, stormwater facilities, illumination, signing, striping, bus shelter and other work, all in accordance with the Contract Plans, Provisions and Standard Specifications.

Bid Documents, including Plans and Special Provisions, may be obtained through Builders Exchange of Washington (<http://www.bxwa.com>) or MTA's Website (<http://www.masontransit.org>). Inquiries regarding the Project may be directed by contacting Patrick Holm at SCJ Alliance (360-352-1465 or patrick.holm@scjalliance.com). Documents will also be on file for inspection at the Mason Transit Authority Business Office.

Project Proposal SEALED BIDS must be received at the Mason Transit Authority Business Office reception desk located at 790 East Johns Prairie Road, Shelton, WA 98584 by 11:00a.m. on **March 1, 2019** and MTA then and there will open and publicly read the bids. Bids may be submitted by mail or hand delivery only.

A pre-bid walkthrough is planned for February 7 at 11:00a.m. at the Pear Orchard Park and Ride site.

Mason Transit Authority reserves the right to reject any and all bids without cause and to waive any informalities or irregularities. MTA reserves the right to award this Contract to the lowest responsive, responsible bidder based on the Bid Proposal.

ADVERTISED IN: Mason Transit Authority Website www.masontransit.org
Builders Exchange of Washington
Seattle Daily Journal of Commerce
Shelton Journal

1 All other information required to be submitted with the Bid Proposal must be submitted
2 with the Bid Proposal itself, at the time stated in the Call for Bids.

3
4 The Contracting Agency will not open or consider any Bid Proposal that is received after
5 the time specified in the Call for Bids for receipt of Bid Proposals, or received in a
6 location other than that specified in the Call for Bids. The Contracting Agency will not
7 open or consider any "Supplemental Information" (UDBE confirmations, or GFE
8 documentation) that is received after the time specified above, or received in a location
9 other than that specified in the Call for Bids.

10

11 **Public Opening of Proposals**

12

13 Section 1-02.12 is supplemented with the following:

14

15 ***(August 3, 2015)***

16 ***Date of Opening Bids***

17 **The bid opening date for this project is *** March 1, 2019 ***. Bids received will be publicly**
18 **opened and read after 11:00 A. M. Pacific Time on this date.**

19

20 **(*****)**

21 Bids received will be publicly opened and read after 11:00 a.m. on this date. The official
22 time shall be based on the time clock located at the Mason Transit Authority office
23 reception desk.

24

25 **1-02.13 Irregular Proposals**

26 ***(June 20, 2017 APWA GSP)***

27

28 Delete this section and replace it with the following:

29

- 30 1. A Proposal will be considered irregular and will be rejected if:
 - 31 a. The Bidder is not prequalified when so required;
 - 32 b. The authorized Proposal form furnished by the Contracting Agency is not
33 used or is altered;
 - 34 c. The completed Proposal form contains any unauthorized additions, deletions,
35 alternate Bids, or conditions;
 - 36 d. The Bidder adds provisions reserving the right to reject or accept the award,
37 or enter into the Contract;
 - 38 e. A price per unit cannot be determined from the Bid Proposal;
 - 39 f. The Proposal form is not properly executed;
 - 40 g. The Bidder fails to submit or properly complete a Subcontractor list, if
41 applicable, as required in Section 1-02.6;
 - 42 h. The Bidder fails to submit or properly complete an Underutilized
43 Disadvantaged Business Enterprise Certification, if applicable, as required in
44 Section 1-02.6;
 - 45 i. The Bidder fails to submit written confirmation from each UDBE firm listed on
46 the Bidder's completed UDBE Utilization Certification that they are in
47 agreement with the bidder's UDBE participation commitment, if applicable, as
48 required in Section 1-02.6, or if the written confirmation that is submitted fails
49 to meet the requirements of the Special Provisions;
 - 50 j. The Bidder fails to submit UDBE Good Faith Effort documentation, if
51 applicable, as required in Section 1-02.6, or if the documentation that is

1
2
3
4
5
6
7
8
9
10
11
12
13
14
15
16
17
18
19
20
21
22
23
24
25
26
27
28
29
30
31
32
33
34
35
36
37
38
39
40
41
42
43
44
45
46
47
48
49
50
51
52

2. Engineer (or representative) and Project Inspectors for the cement concrete sidewalk, curb ramp or pedestrian access route Work.

Items to be discussed in this meeting shall include, at a minimum, the following:

1. Slopes shown on the Plans.
2. Inspection
3. Traffic control
4. Pedestrian control, access routes and delineation
5. Accommodating utilities
6. Form work
7. Installation of detectable warning surfaces
8. Contractor ADA survey and ADA Feature as-built requirements
9. Cold Weather Protection

(January 7, 2019)

Layout and Conformance to Grades

Using the information provided in the Contract documents, the Contractor shall lay out, grade, and form each new curb ramp, sidewalk, and curb and gutter.

Illumination, Traffic Signal Systems, Intelligent Transportation Systems, and Electrical

Description

Section 8-20.1 is supplemented with the following:

This Work consists of constructing light standards and luminaires with new conduit, conductors and other work to provide illumination for the MTA park and ride.

Materials

Section 8-20.2 is supplemented with the following:

Light and Signal Standards

Section 8-20.2(9-29.6) is supplemented with the following:

Parking lot light standards and luminaire arm will be HAPCO series and black powder coated model number RTA25E8B4T2C-XX.

Pedestrian scale light standards shall be Eaton McGraw Edison pole Washington Style, WA31242SFXBK

1
2
3
4
5
6
7
8
9
10
11
12
13
14
15
16
17
18
19
20
21
22
23
24
25
26
27
28
29
30
31
32
33
34
35
36
37
38
39
40
41
42
43
44
45
46
47
48
49
50

Conventional Roadway Luminaires

In Section 8-20.2(9-29.10(1)), Item A is revised to read as follows:

Parking lot luminaires shall be American Electric Lighting LED Autobahn series model ATB2 40BLEDE70 XXXXX XX 3K

Pedestrian scale luminaires shall be Eaton McGraw Edison GAR-080-LED-E1-3-AXX-BK

Construction Requirements

Serving Utility Connection

Section 8-20.3 is supplemented with the following:

(*****)

Serving Utility Connection

Service connections are subject to serving utility requirements. The Contractor is responsible for determining the serving utility requirements for all equipment installed from the meter to the point of connection to the utility system, including the meter location. Customer owned equipment installed as part of the service connection shall be code compliant, but is still subject to utility approval. All costs associated with the materials, equipment, and labor required to install a service connection are included in the schedule of value price.

Conduit

General

The fourth paragraph of Section 8-20.3(5)A is revised to read as follows:

For conduits designated as spare or for future use, as soon as the sizing mandrel has been pulled through, a 200-lb minimum tensile strength pull string shall be installed and attached to duct plugs at both ends. Empty or spare conduits for future use do not require a ground conductor.

Empty or spare PVC or HDPE conduits shall include location wire unless otherwise detailed in the plans. Location wire shall extend 12 feet into boxes and vaults. The Contractor shall coil and secure location wire at the entrance and exit points of all boxes and vaults. Splices shall be crimped using a non-insulated butt splice, soldered and covered with moisture-blocking heat shrink. All location wire splices shall be installed in the junction boxes, pull boxes, and cable vaults. Splices shall not be allowed within the conduit runs.

The Contractor shall verify that the location wire can be detected for the entire length of the conduit run using standard utility locating equipment.